

# Chart Collection for Morning Briefing

Yardeni Research, Inc.

*November 7, 2017*

**Dr. Edward Yardeni**

516-972-7683  
eyardeni@yardeni.com

**Mali Quintana**

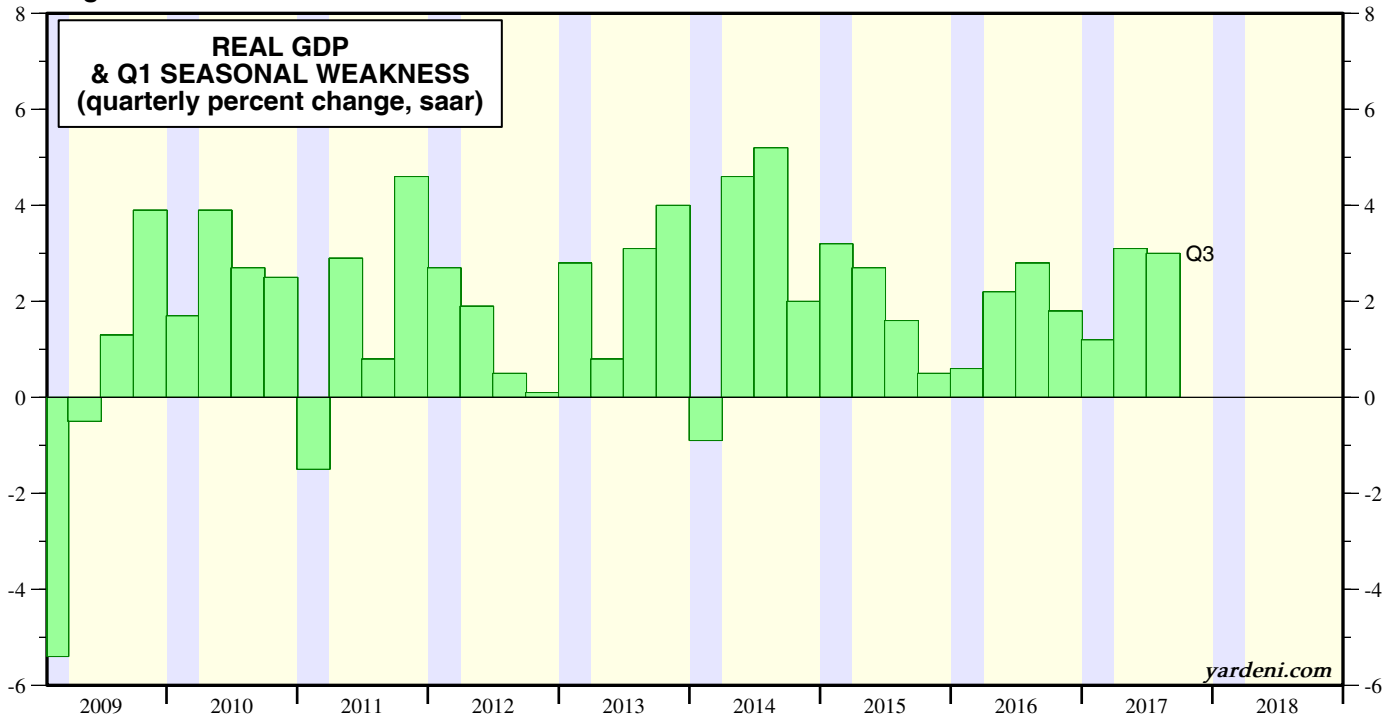
480-664-1333  
aquintana@yardeni.com

Please visit our sites at  
[www.yardeni.com](http://www.yardeni.com)  
[blog.yardeni.com](http://blog.yardeni.com)



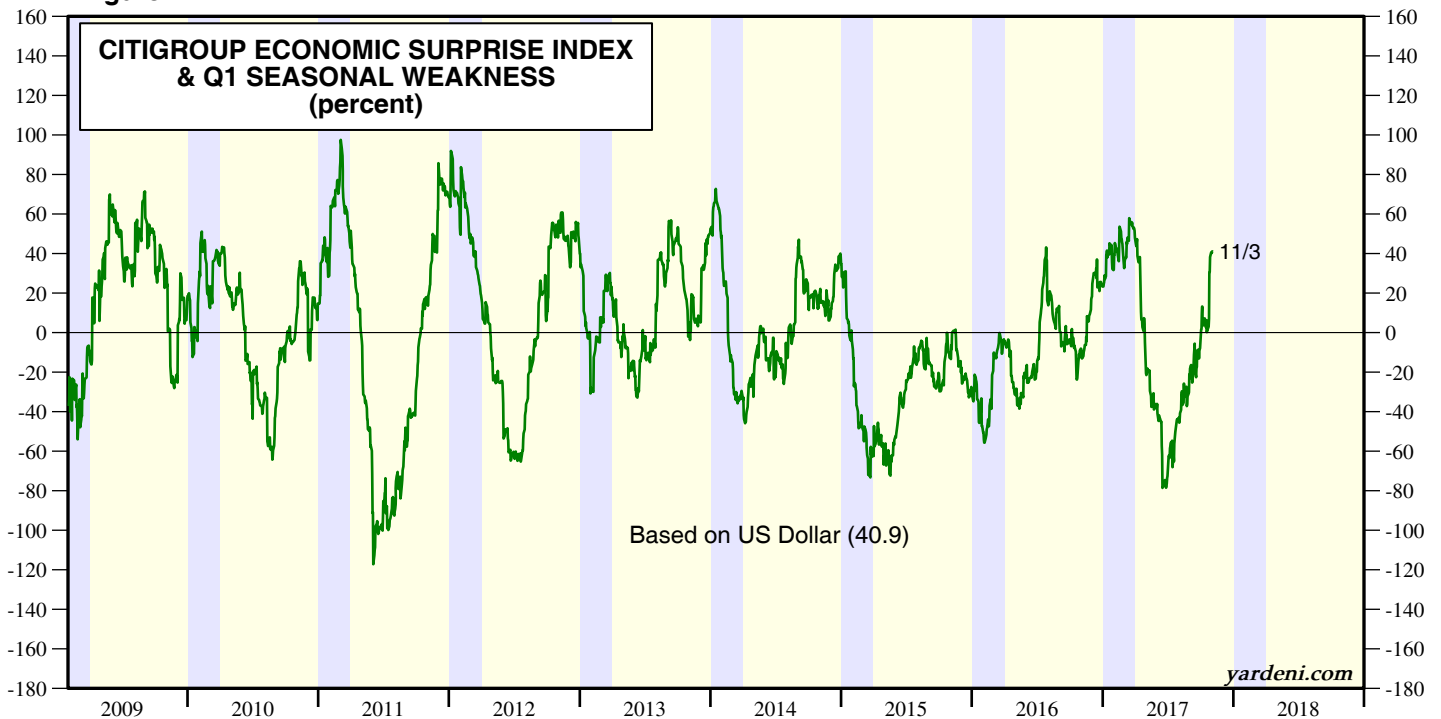
*thinking outside the box*

**Figure 1.**



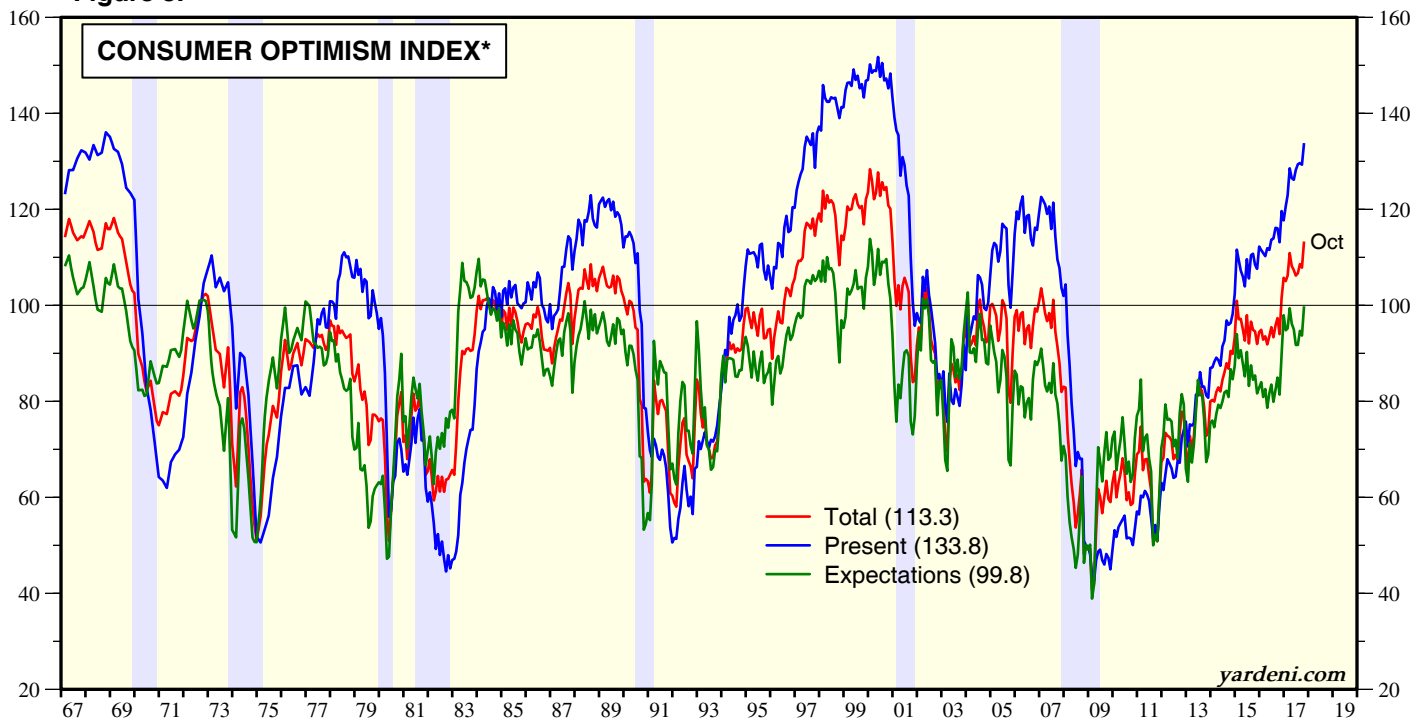
Note: Blue shaded areas denote first quarter of each year.  
Source: Bureau of Economic Analysis.

**Figure 2.**



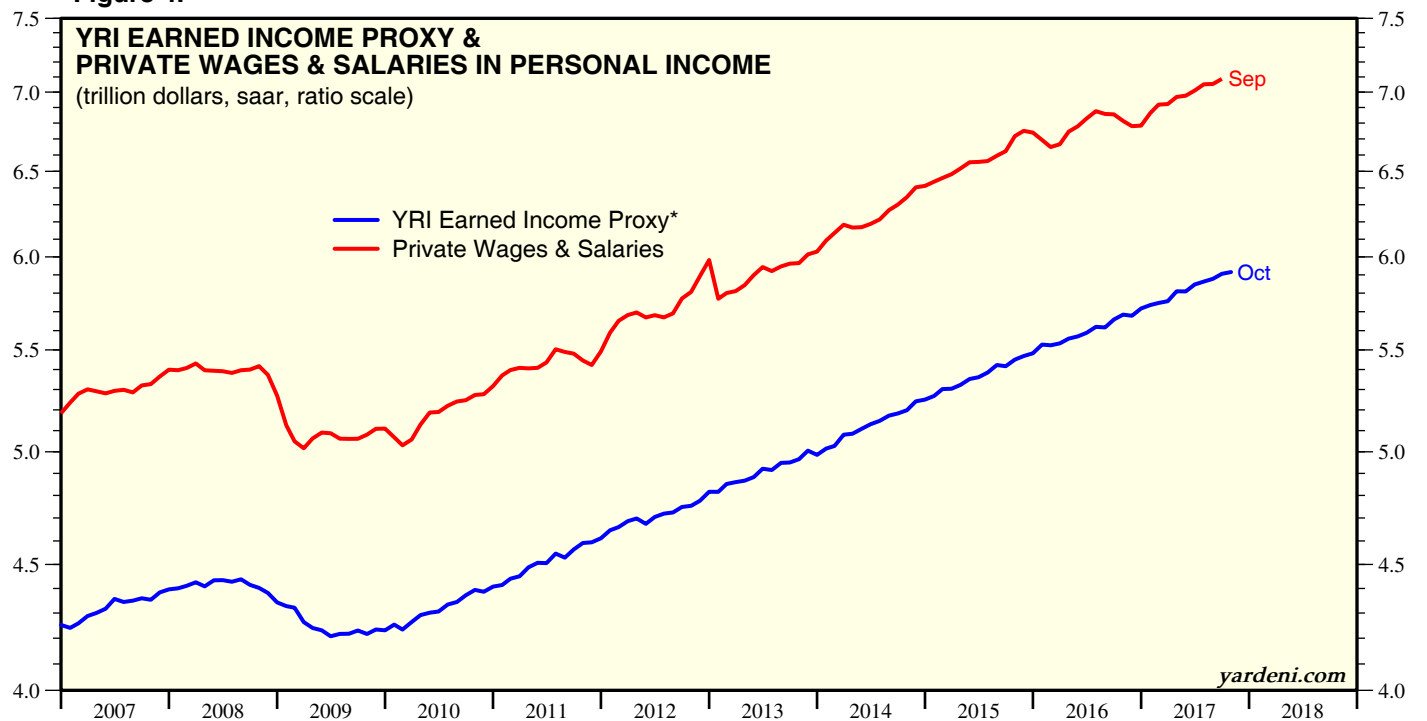
Note: Blue shaded areas denote first quarter of each year.  
Source: Citigroup.

**Figure 3.**



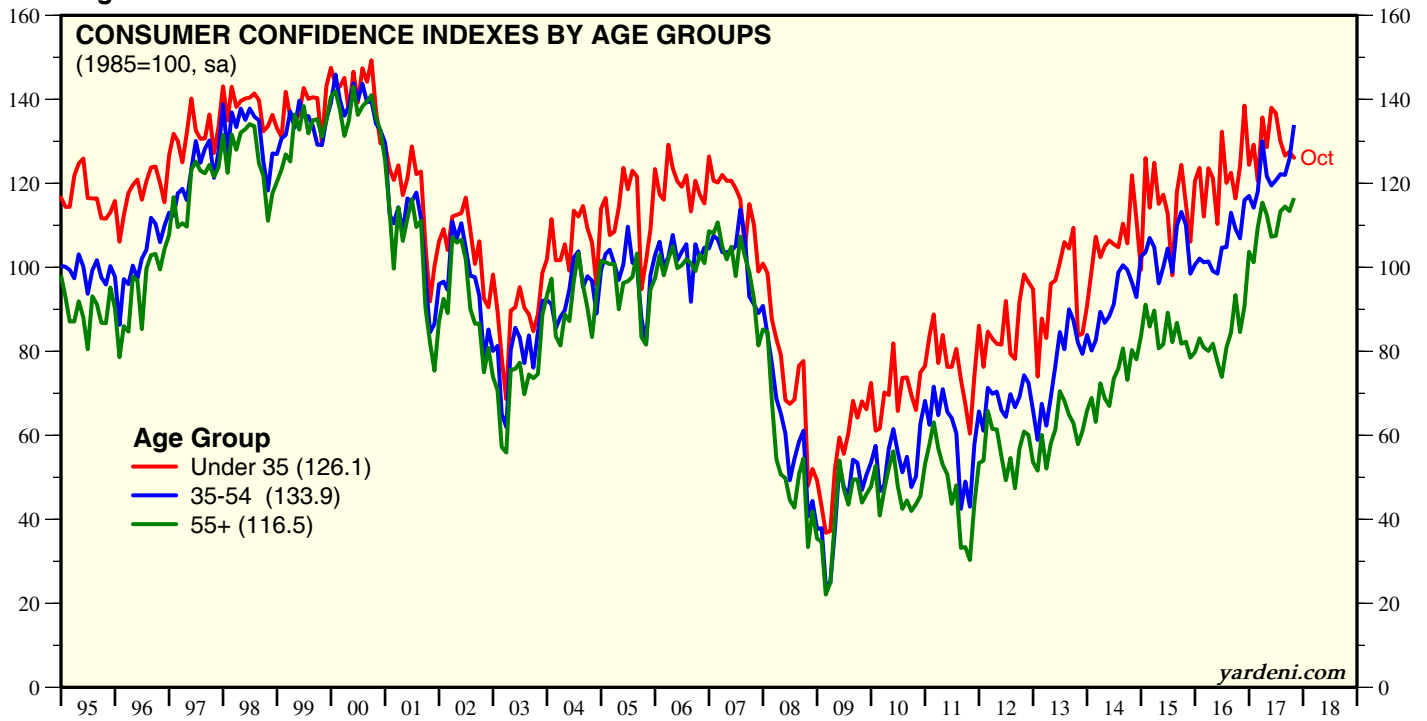
\* Average of Consumer Sentiment Index and Consumer Confidence Index.  
 Note: Shaded areas denote recessions according to the National Bureau of Economic Research.  
 Source: The Conference Board and the University of Michigan Survey Research Center.

**Figure 4.**



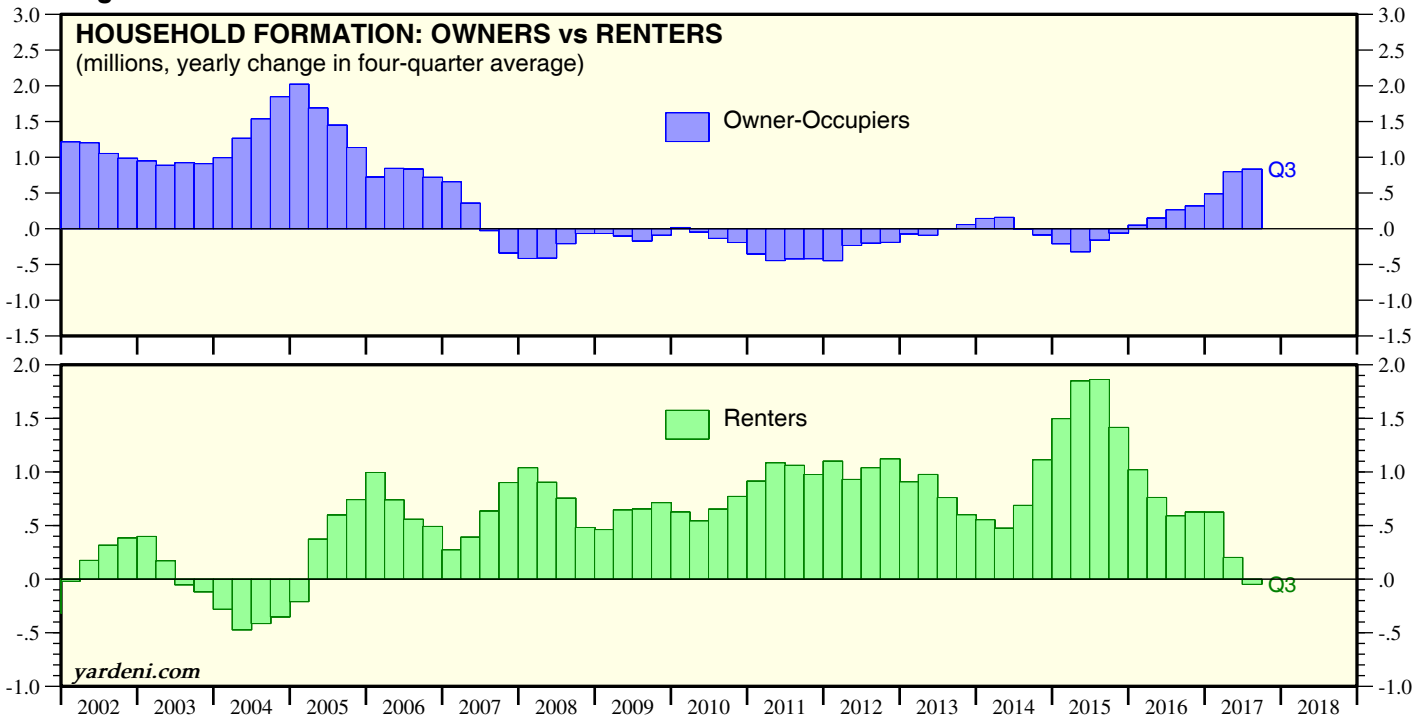
\* Aggregate weekly hours times average hourly earnings of total private industries times 52.  
 Source: Bureau of Labor Statistics and Bureau of Economic Analysis.

Figure 5.



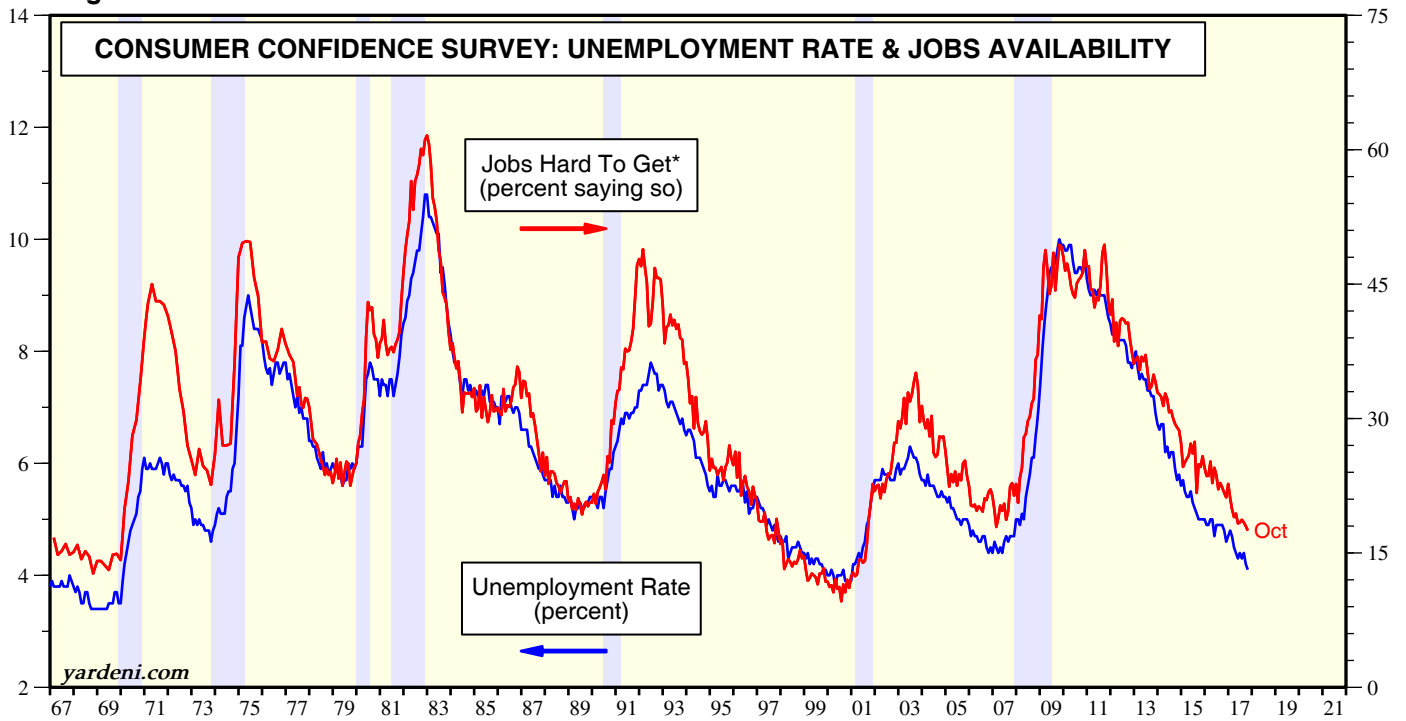
Source: The Conference Board.

Figure 6.



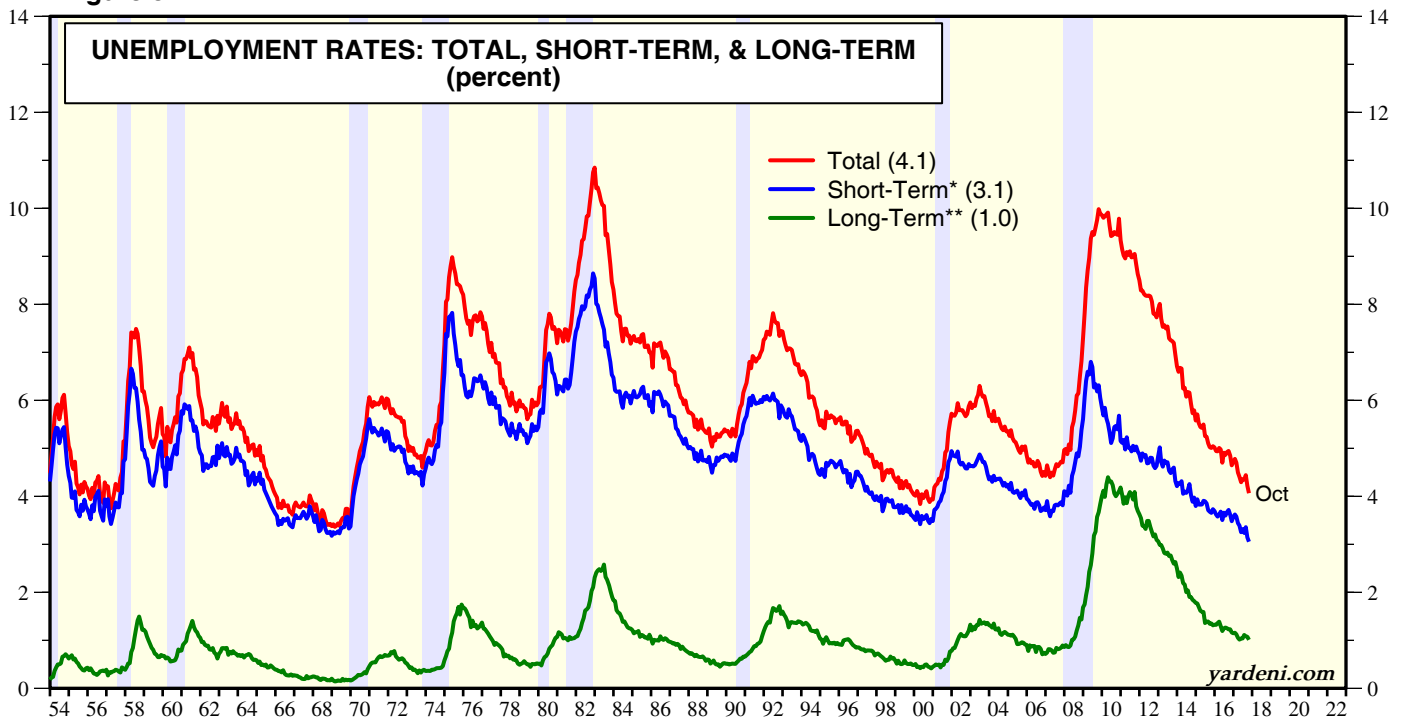
Source: Census Bureau and Haver Analytics.

Figure 7.



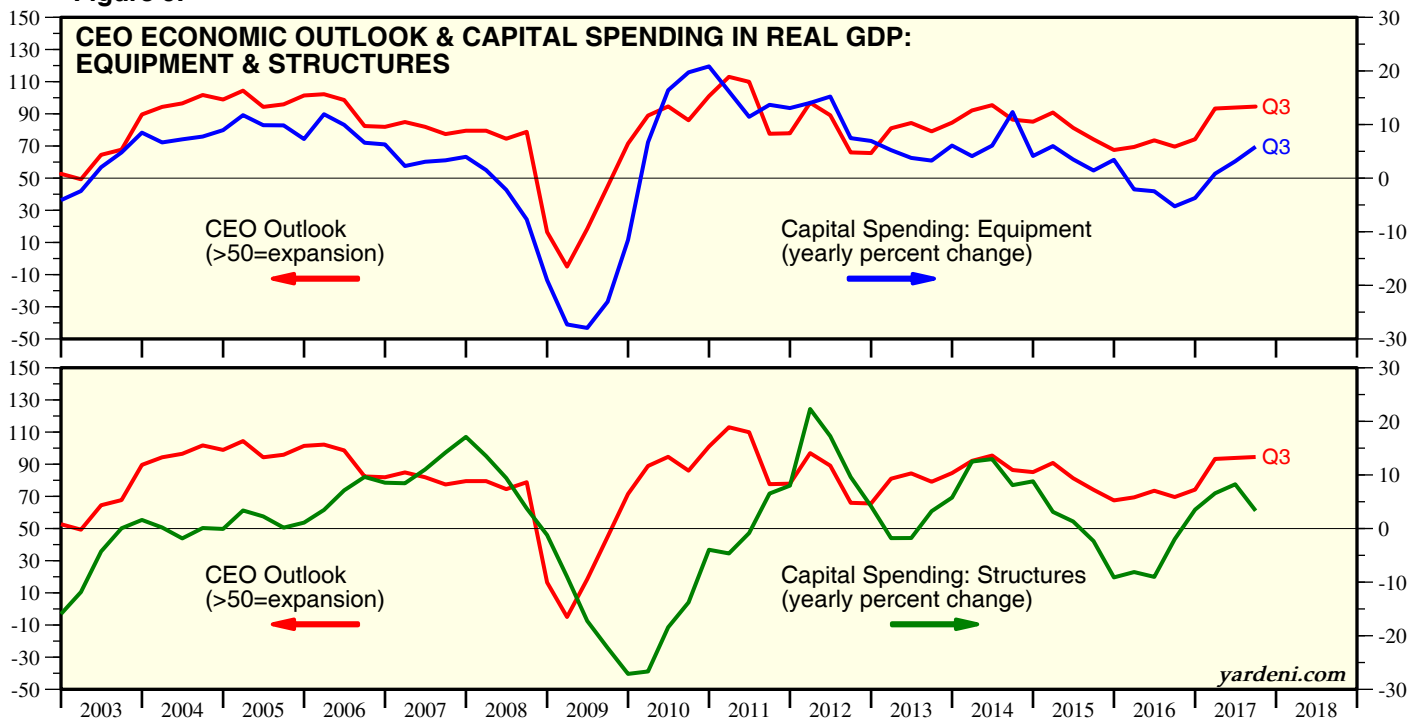
\* Every other month from 1967 through mid-1977, then monthly since July 1977. Seasonally adjusted.  
 Note: Shaded areas denote recessions according to the National Bureau of Economic Research.  
 Source: The Conference Board and Bureau of Labor Statistics.

Figure 8.



\* Unemployed for less than 27 weeks.  
 \*\* Unemployed for 27 weeks and longer.  
 Note: Shaded areas denote recessions according to the National Bureau of Economic Research.  
 Source: Bureau of Labor Statistics.

**Figure 9.**



**Figure 10.**

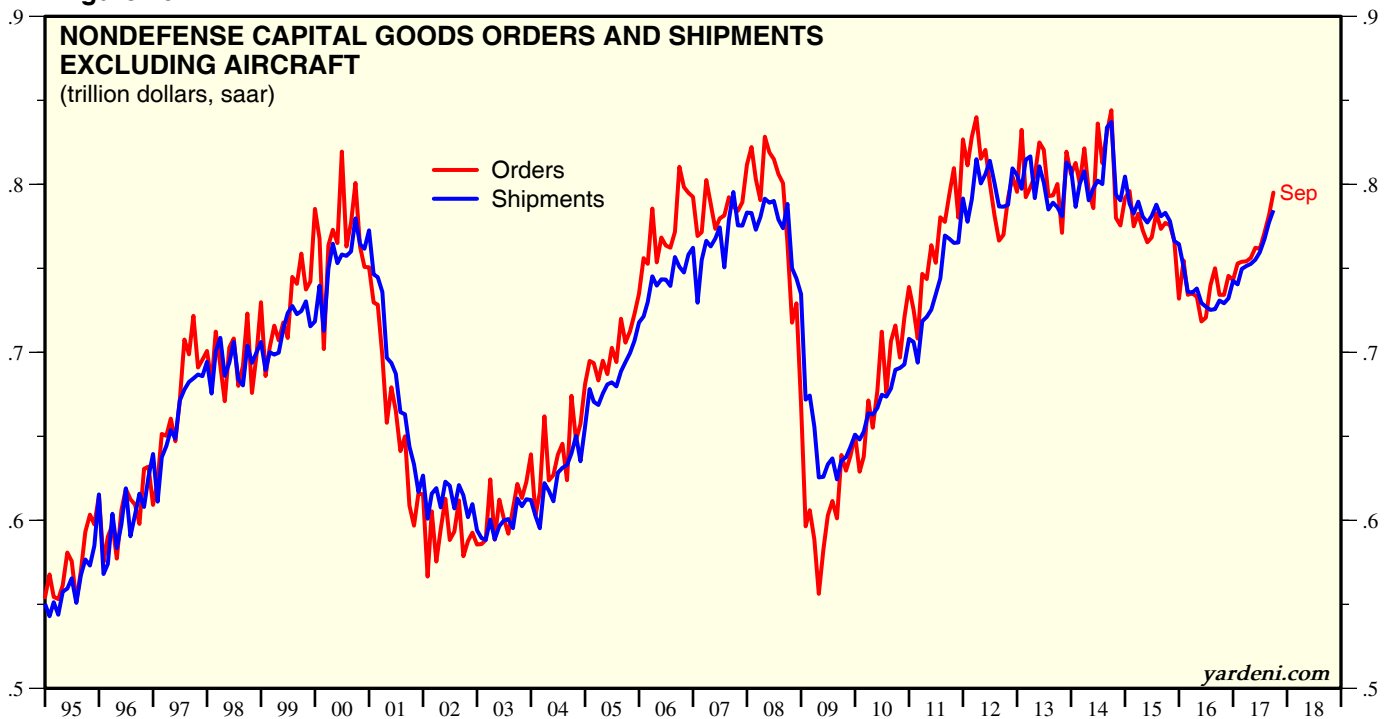
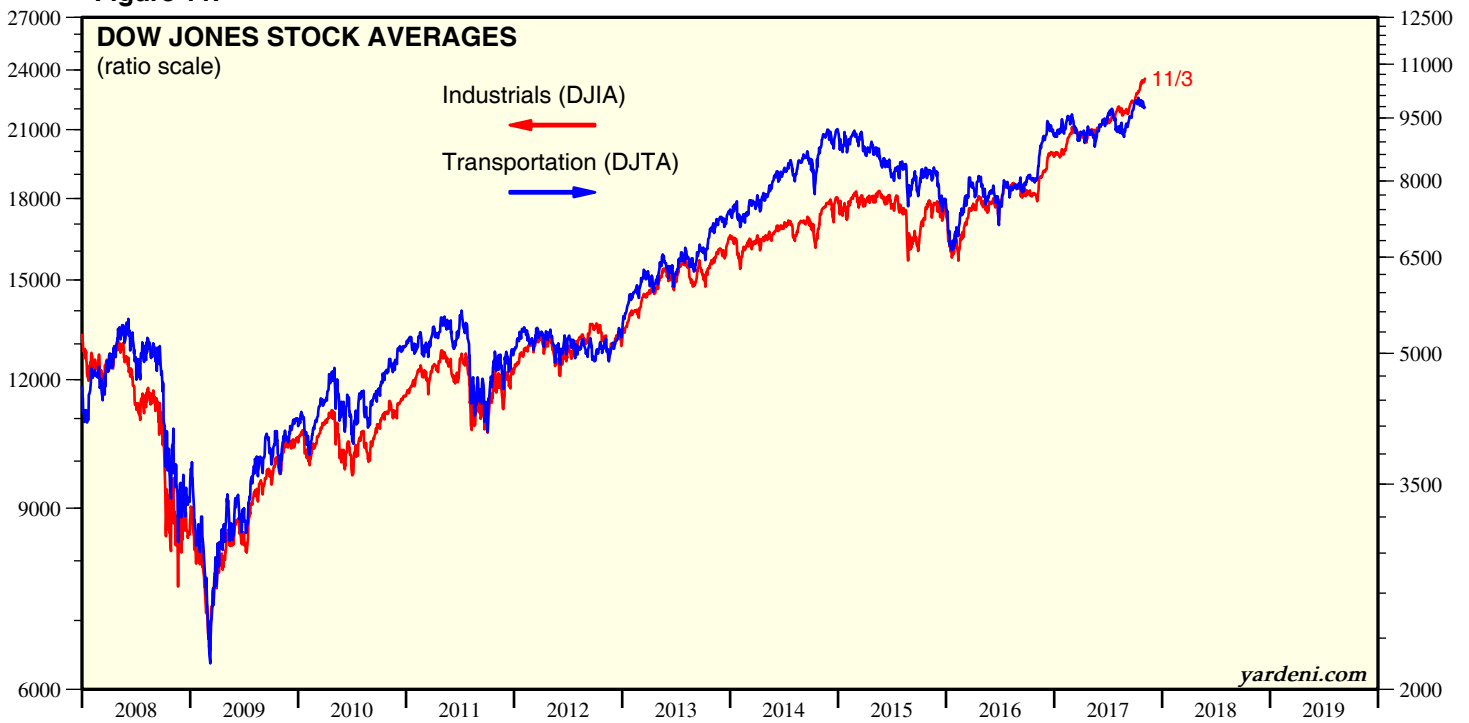
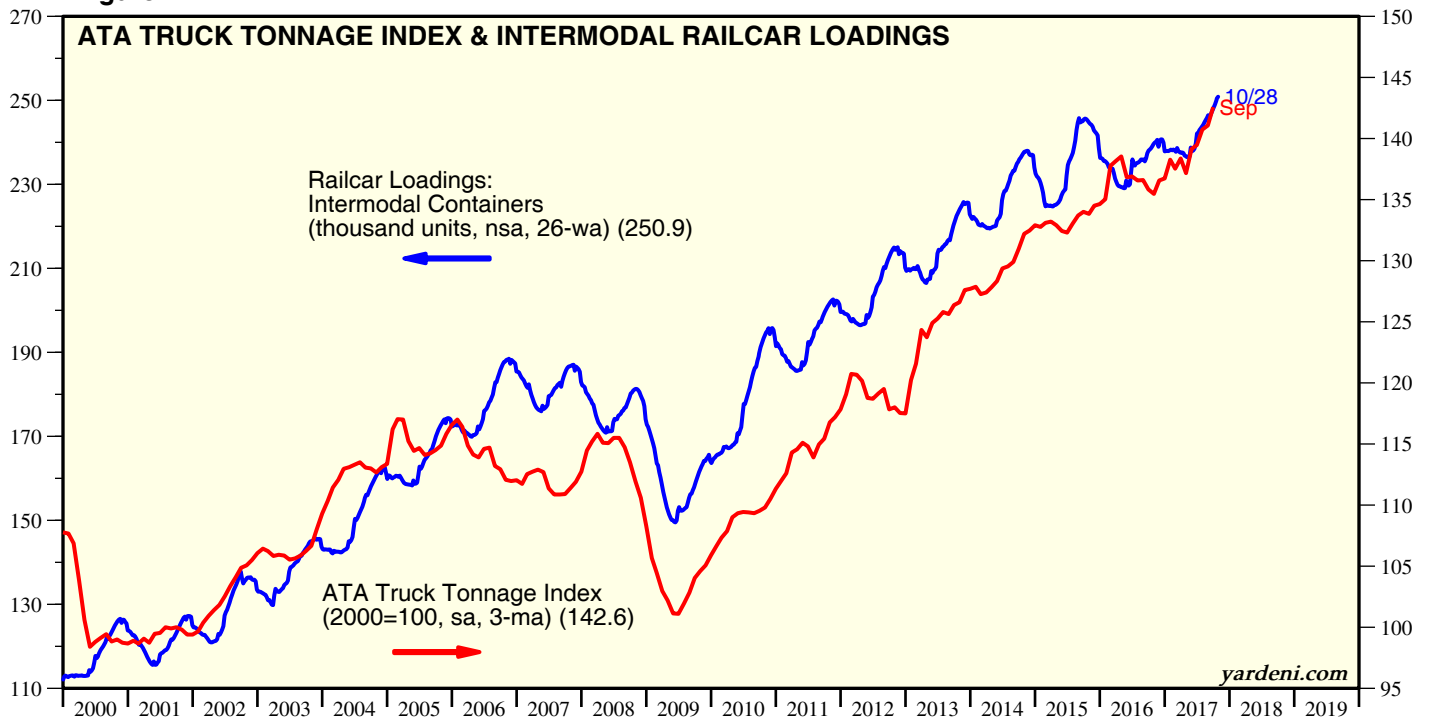


Figure 11.



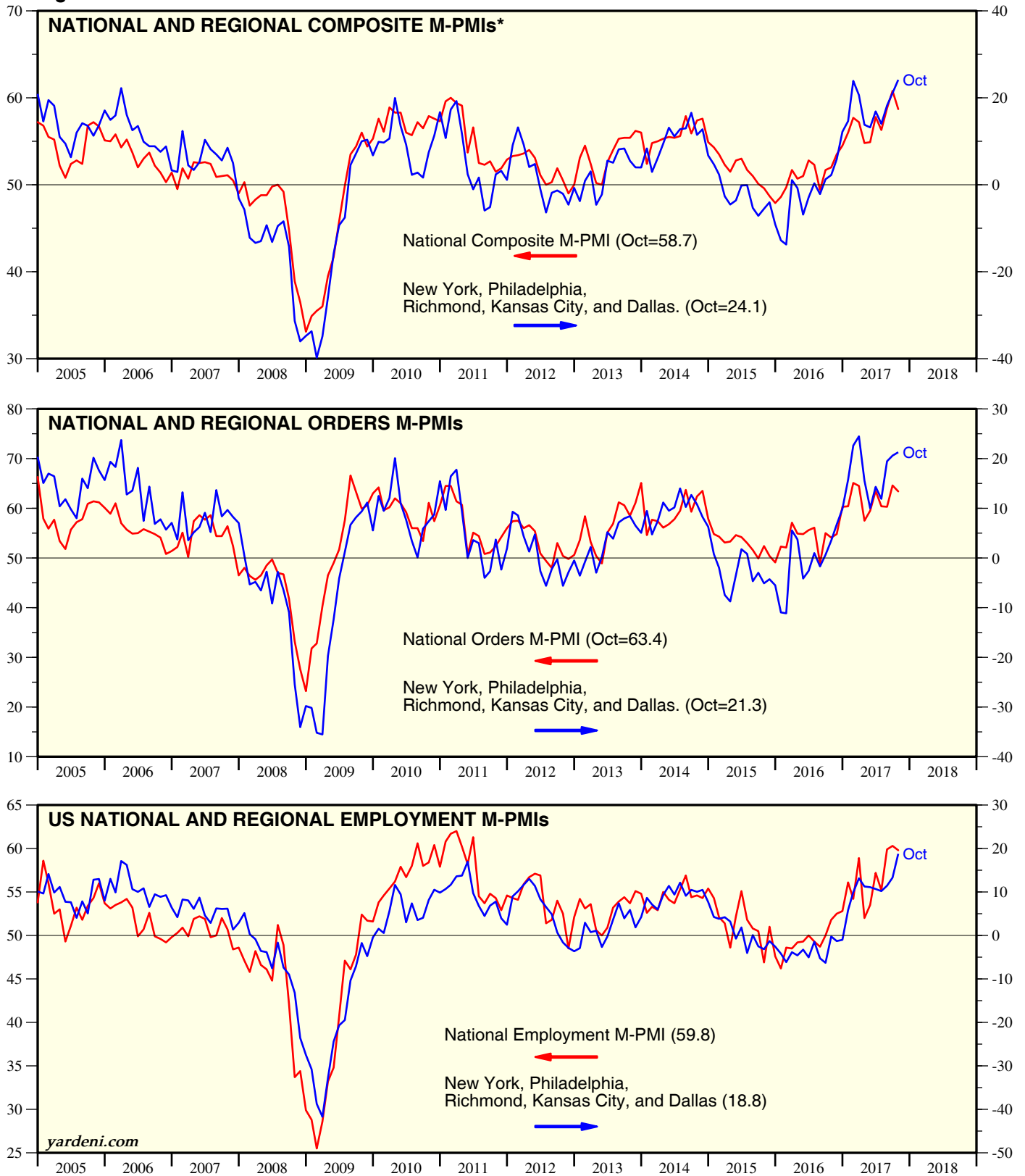
Source: The Wall Street Journal.

Figure 12.



Source: American Trucking Association and Atlantic Systems.

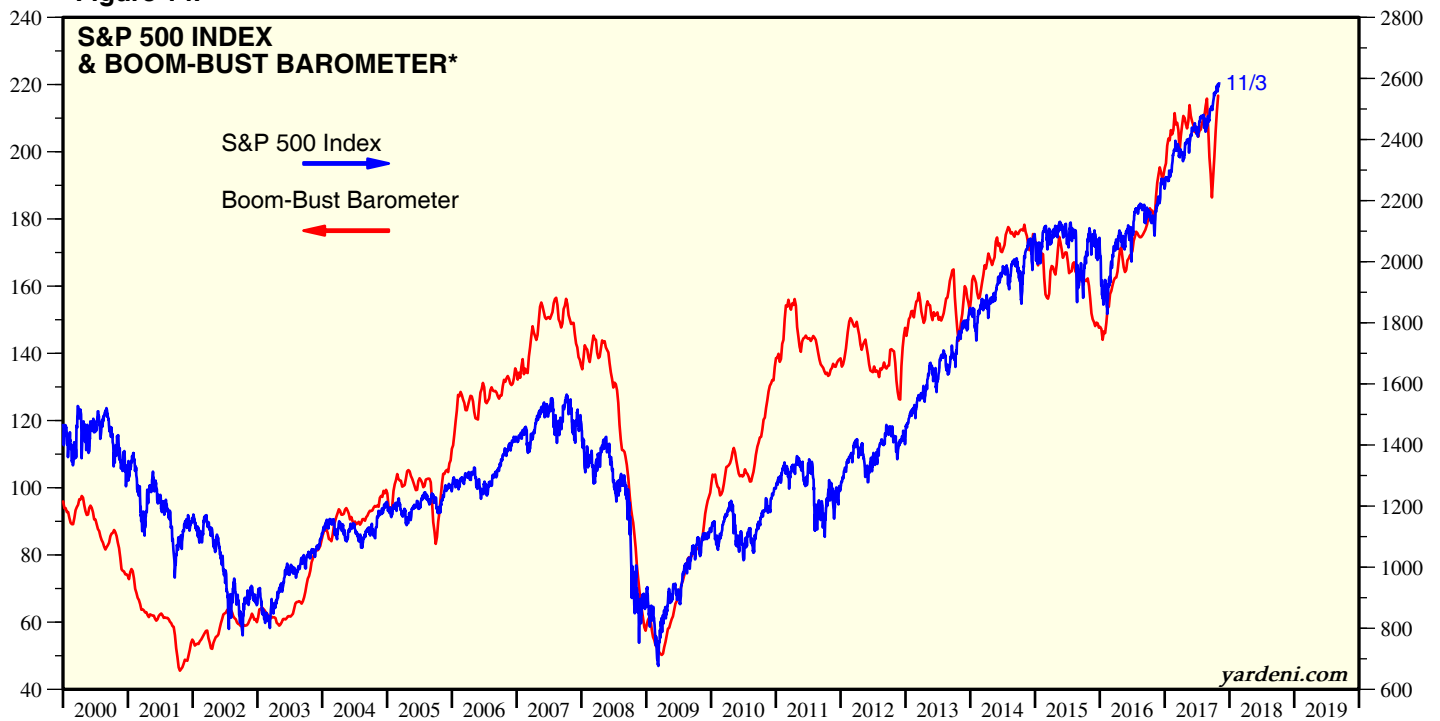
**Figure 13.**



\* Chicago contains both manufacturing and non-manufacturing firms with global operations.  
 Source: Federal Reserve Banks of Kansas City, New York, Philadelphia, Richmond, Dallas, and Deutsche Borse Group.

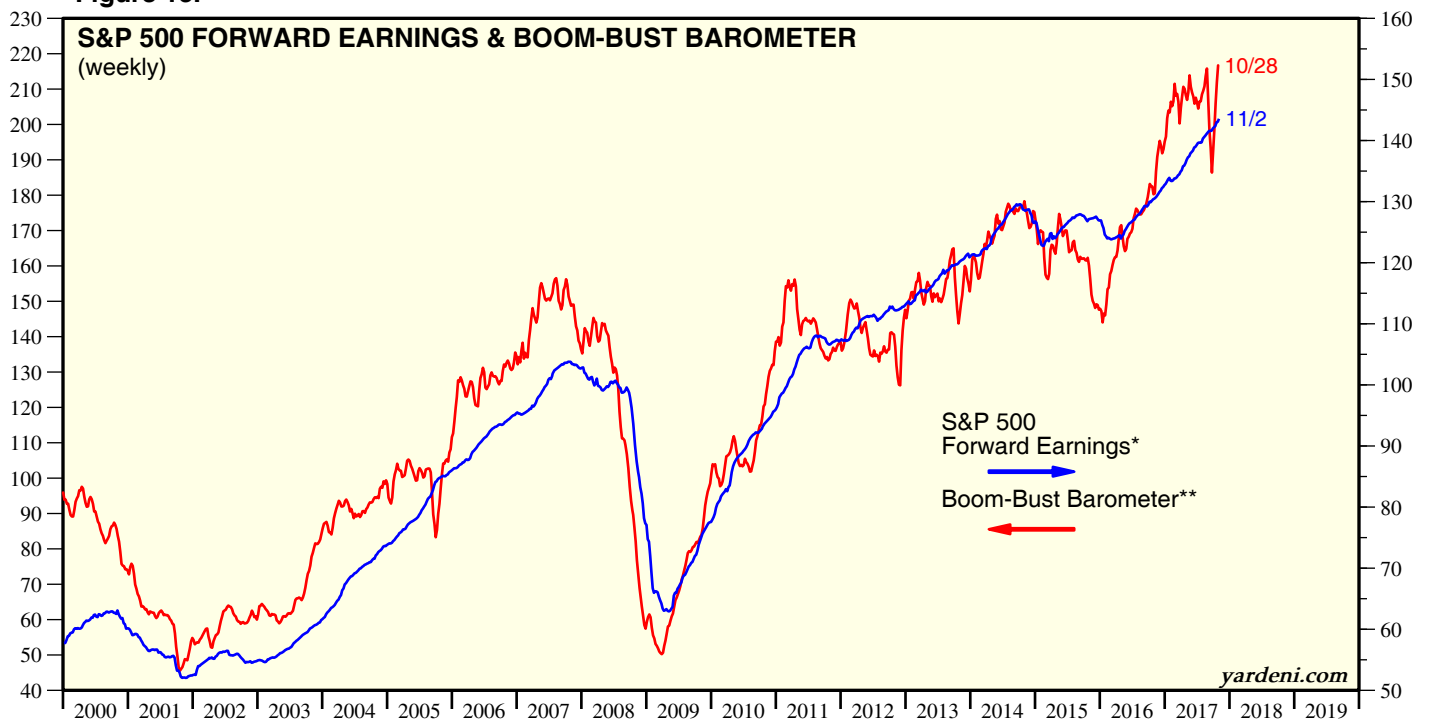


**Figure 14.**



\* CRB raw industrials spot price index (weekly average) divided by weekly initial unemployment claims, showing four-week moving average.  
Source: Bloomberg, Commodity Research Bureau, Bureau of Labor Statistics, and Standard & Poor's.

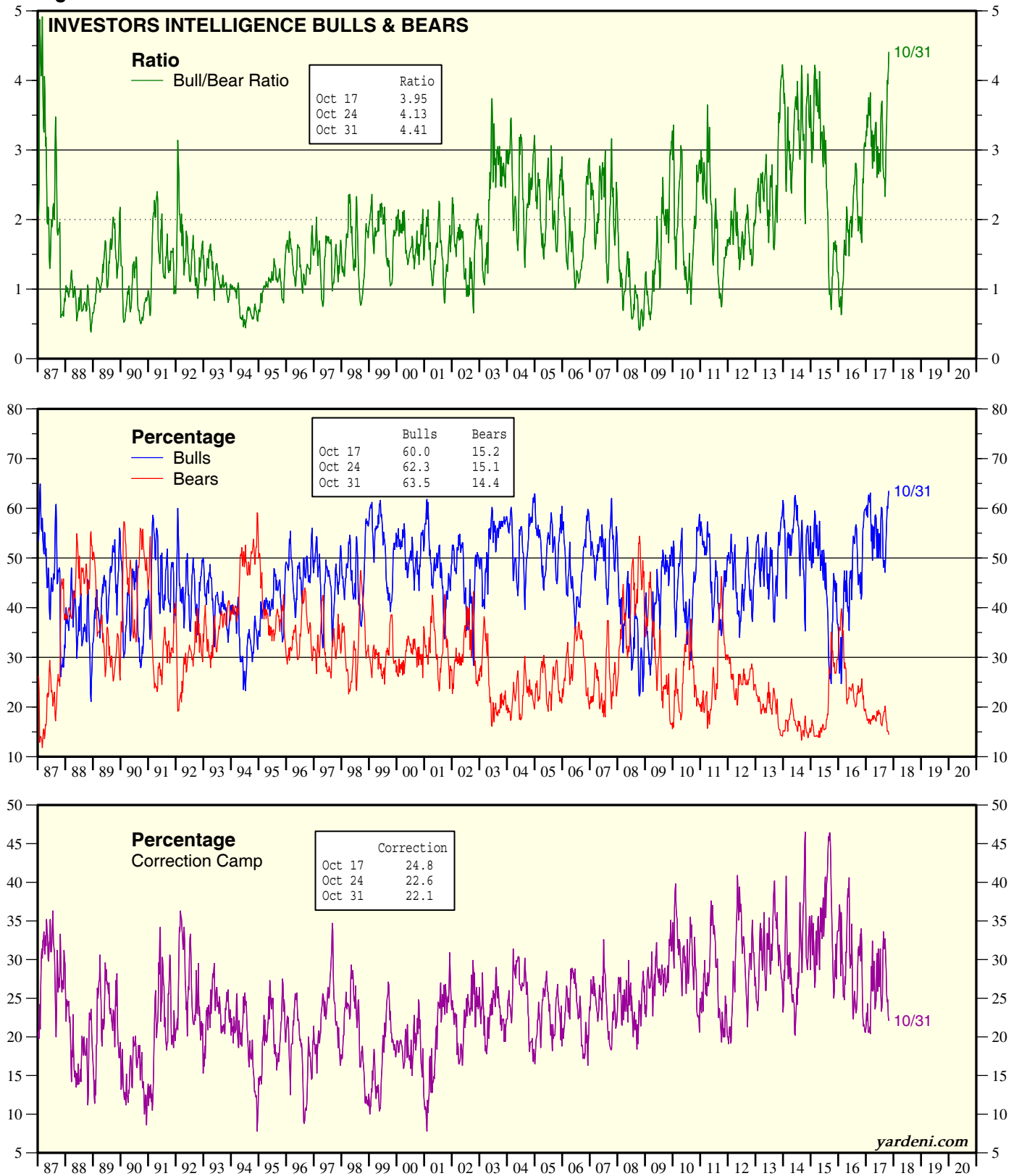
**Figure 15.**



\* Time-weighted average of consensus estimates for the current year and next year.

\*\* CRB raw industrials spot price index (weekly average) divided by weekly initial unemployment claims, showing four-week moving average.  
Source: Commodity Research Bureau, Bureau of Labor Statistics, and Thomson Reuters I/B/E/S.

Figure 16.



Source: Investors Intelligence.

**Copyright (c) Yardeni Research, Inc. 2017.** All rights reserved. The information contained herein has been obtained from sources believed to be reliable, but is not necessarily complete and its accuracy cannot be guaranteed. No representation or warranty, express or implied, is made as to the fairness, accuracy, completeness, or correctness of the information and opinions contained herein. The views and the other information provided are subject to change without notice. All reports posted on [www.yardeni.com](http://www.yardeni.com), [blog.yardeni.com](http://blog.yardeni.com), and YRI's Apps for iPads and iPhones are issued without regard to the specific investment objectives, financial situation, or particular needs of any specific recipient and are not to be construed as a solicitation or an offer to buy or sell any securities or related financial instruments. Past performance is not necessarily a guide to future results. Company fundamentals and earnings may be mentioned occasionally, but should not be construed as a recommendation to buy, sell, or hold the company's stock. Predictions, forecasts, and estimates for any and all markets should not be construed as recommendations to buy, sell, or hold any security--including mutual funds, futures contracts, and exchange traded funds, or any similar instruments.

The text, images, and other materials contained or displayed on any Yardeni Research, Inc. product, service, report, email or website are proprietary to Yardeni Research, Inc. and constitute valuable intellectual property. No material from any part of [www.yardeni.com](http://www.yardeni.com), [blog.yardeni.com](http://blog.yardeni.com), and YRI's Apps for iPads and iPhones may be downloaded, transmitted, broadcast, transferred, assigned, reproduced or in any other way used or otherwise disseminated in any form to any person or entity, without the explicit written consent of Yardeni Research, Inc. All unauthorized reproduction or other use of material from Yardeni Research, Inc. shall be deemed willful infringement(s) of this copyright and other proprietary and intellectual property rights, including but not limited to, rights of privacy. Yardeni Research, Inc. expressly reserves all rights in connection with its intellectual property, including without limitation the right to block the transfer of its products and services and/or to track usage thereof, through electronic tracking technology, and all other lawful means, now known or hereafter devised. Yardeni Research, Inc. reserves the right, without further notice, to pursue to the fullest extent allowed by the law any and all criminal and civil remedies for the violation of its rights.

The recipient should check any email and any attachments for the presence of viruses. Yardeni Research, Inc. accepts no liability for any damage caused by any virus transmitted by this company's emails, website, blog and Apps. Additional information available on [request](#).