

Inflation Monitor I: Prices Paid & Received, Commodities, Imports, and Producer Prices

Yardeni Research, Inc.

February 17, 2021

Dr. Edward Yardeni

516-972-7683
eyardeni@yardeni.com

Debbie Johnson

480-664-1333
djohnson@yardeni.com

Mali Quintana

480-664-1333
aquintana@yardeni.com

Please visit our sites at
www.yardeni.com
blog.yardeni.com



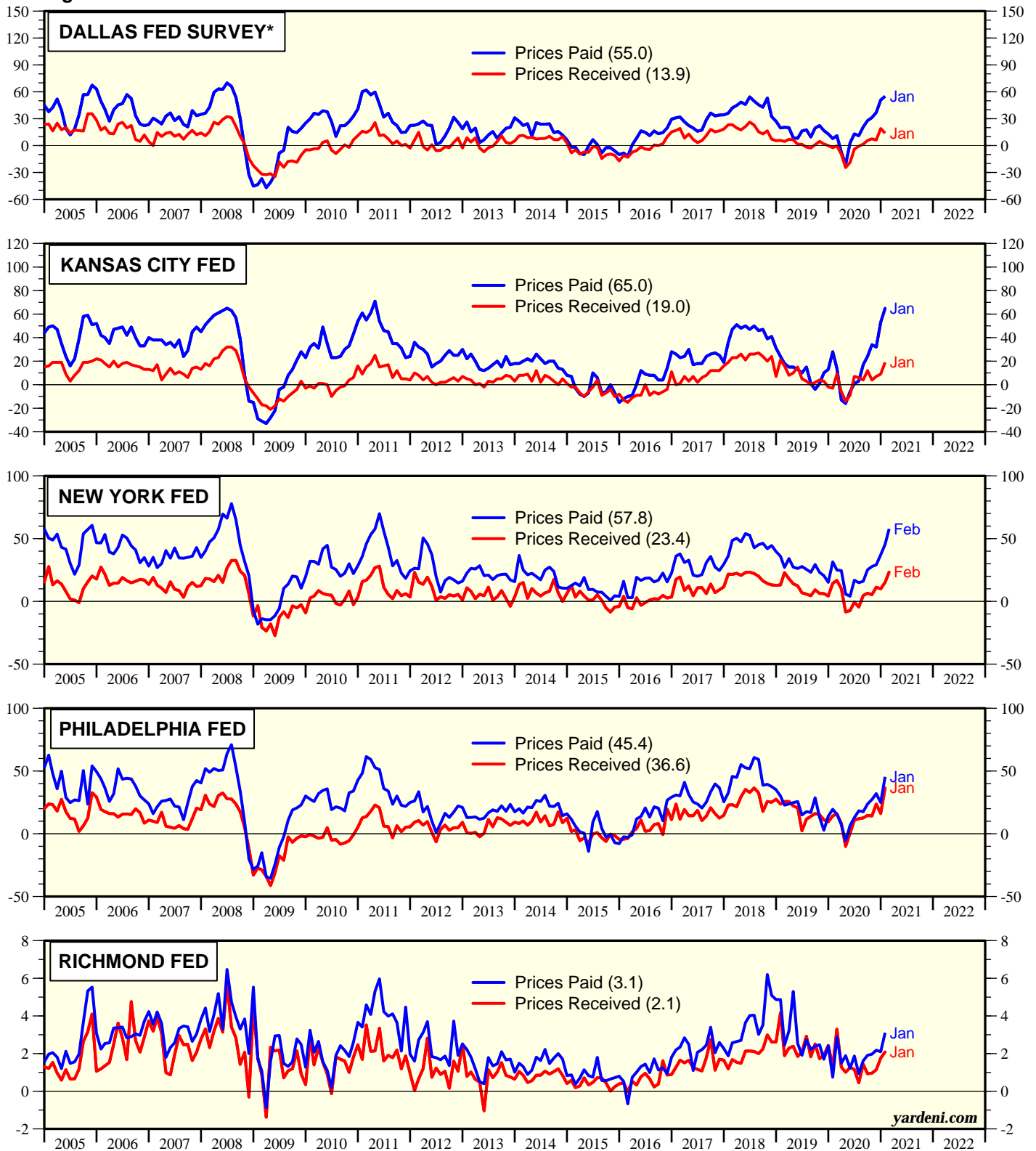
thinking outside the box

Table Of Contents

Surveys	1-3
Prices Paid	4
Prices Paid & Received	5
Commodity Prices & PPI	6-7
Commodity Prices & the Dollar	8
Imports Prices & PPI	9
Prices Paid	10-11

Surveys

Figure 1.

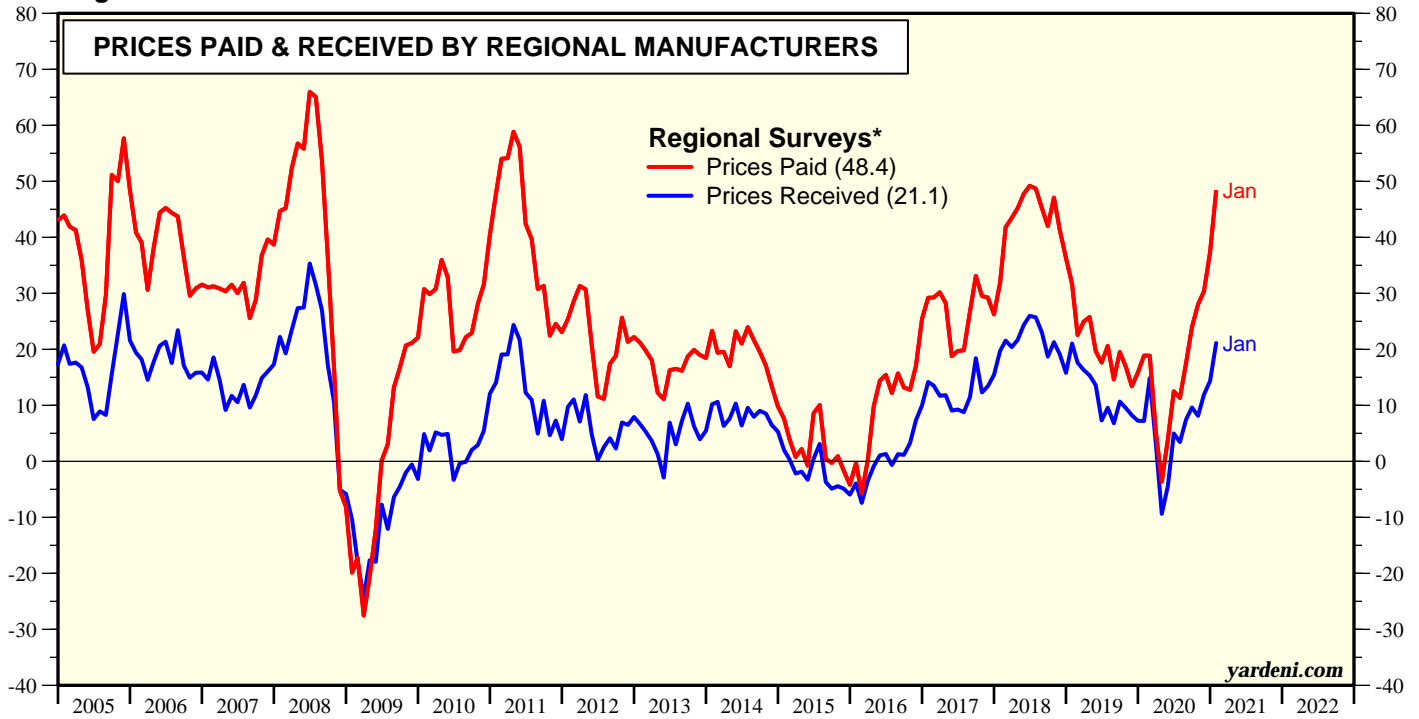


* Richmond prices are not diffusion indexes, but rather average annualized inflation rates.

Source: Survey of business conditions conducted regionally by Federal Reserve Banks of Dallas, Kansas City, New York, Philadelphia, Richmond.

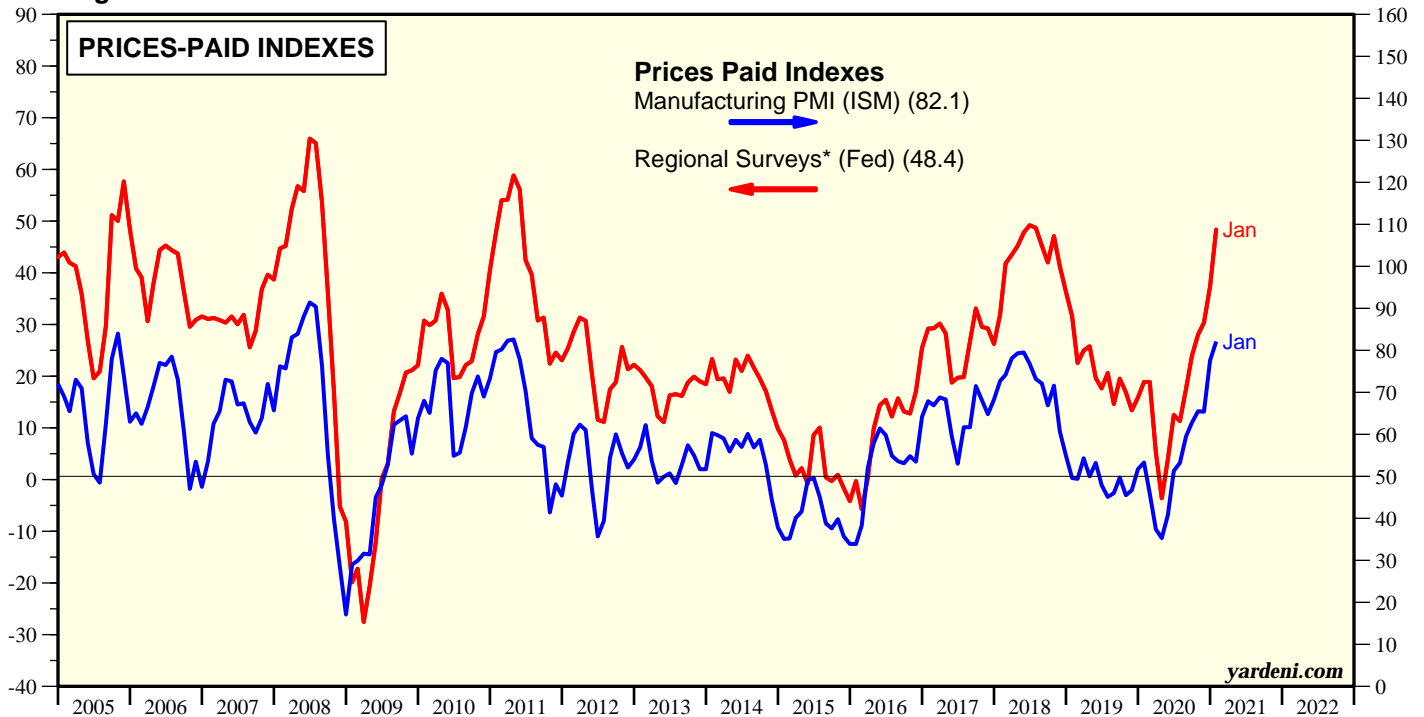
Surveys

Figure 2.



* Average of prices paid and received in surveys conducted by Dallas, Kansas City, New York, Philly, and Richmond Fed district banks. Richmond prices are not diffusion indexes, but rather average annualized inflation rates. They are multiplied by 10 in this chart for easier comparisons to other regional diffusion indexes.
Source: Federal Reserve Banks of Dallas, Kansas City, New York, Philadelphia, and Richmond.

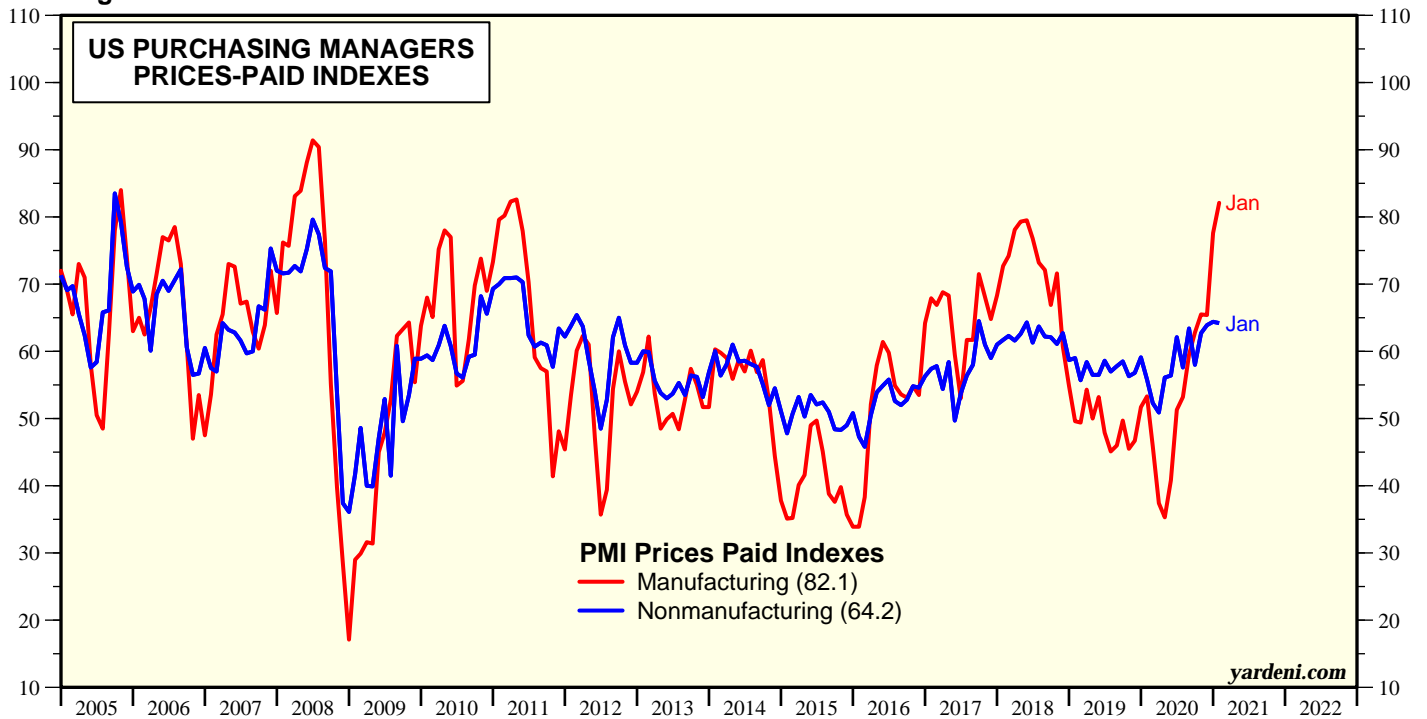
Figure 3.



* Average of prices paid and received in surveys conducted by Dallas, Kansas City, New York, Philly, and Richmond Fed district banks. Richmond prices are not diffusion indexes, but rather average annualized inflation rates. They are multiplied by 10 in this chart for easier comparisons to other regional diffusion indexes.
Source: Institute for Supply Management, Federal Reserve Banks of Dallas, Kansas City, New York, Philadelphia, and Richmond.

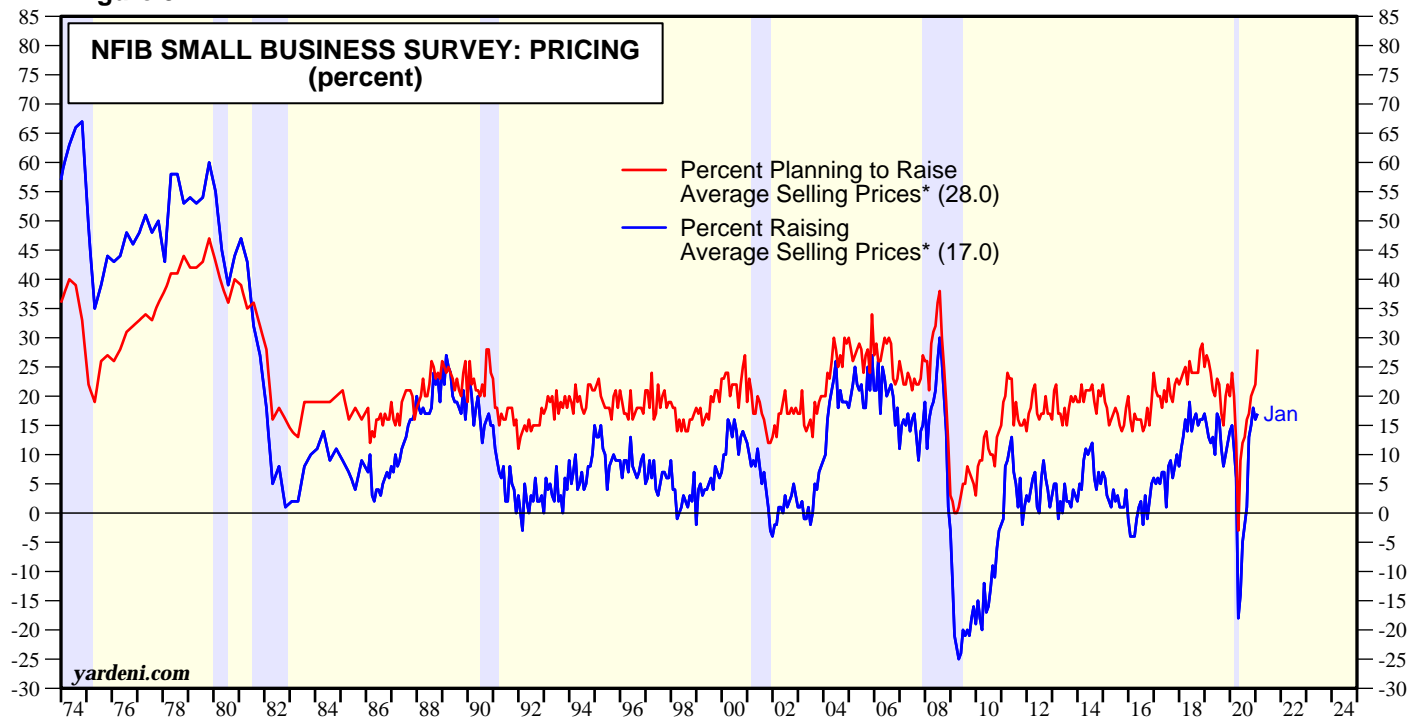
Surveys

Figure 4.



Source: Institute for Supply Management.

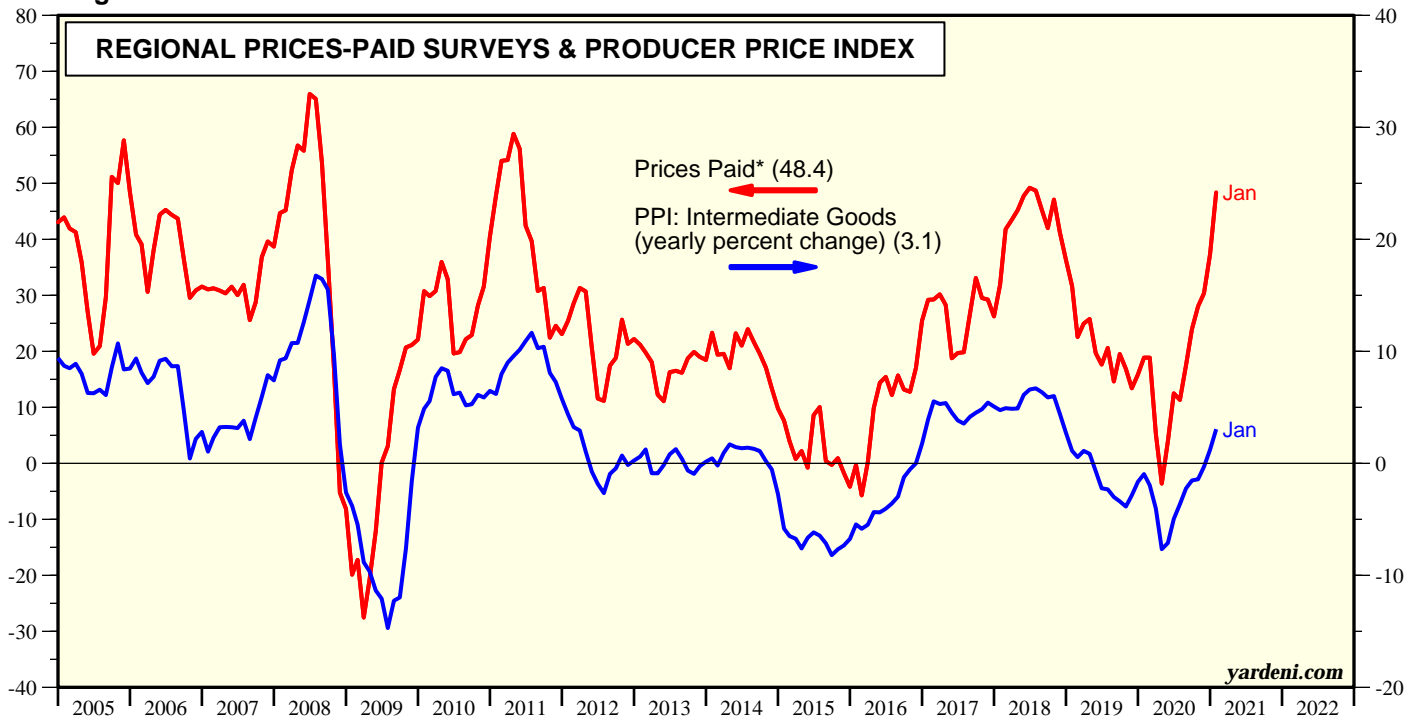
Figure 5.



* First month of every quarter from 1974 to 1986, then monthly.
 Note: Shaded areas denote recessions according to the National Bureau of Economic Research.
 Source: National Federation of Independent Business.

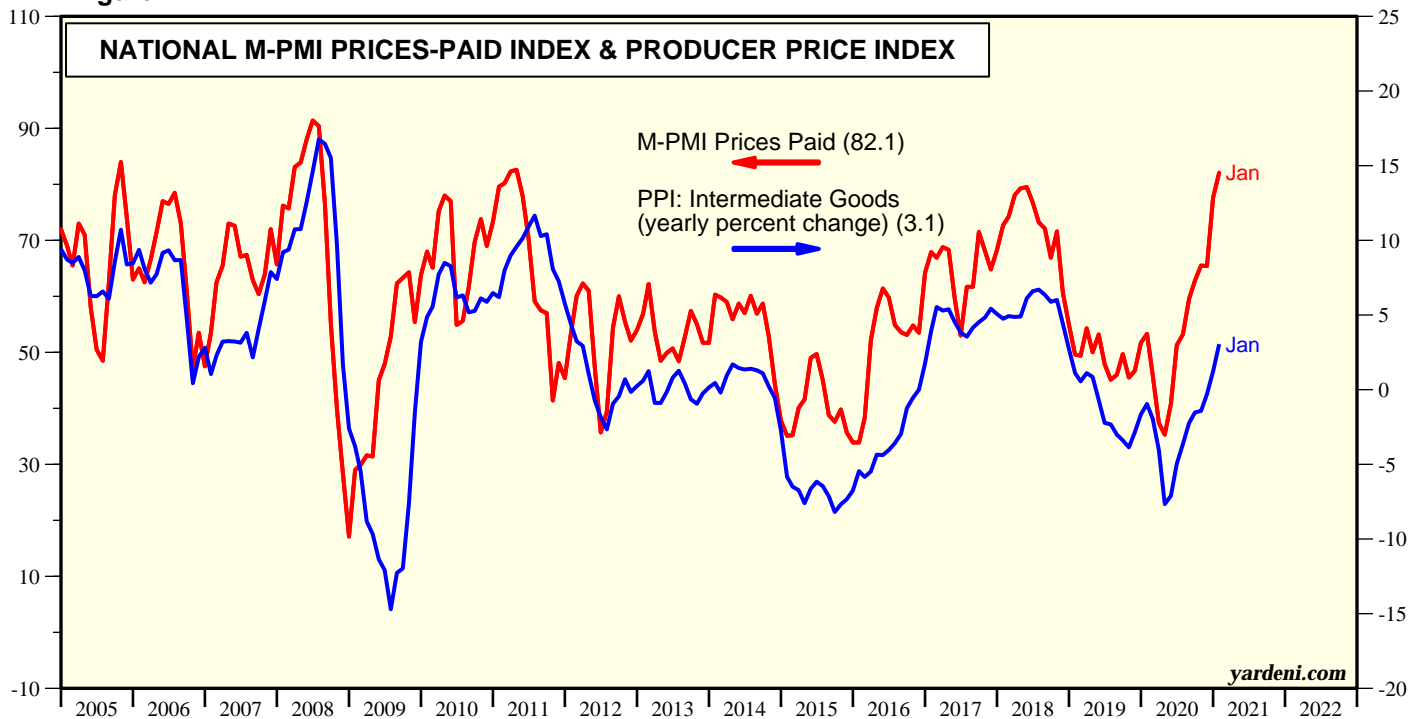
Prices Paid

Figure 6.



* Average of prices received in surveys conducted by Dallas, Kansas City, New York, Philly, and Richmond Fed district banks. Richmond prices are not diffusion indexes, but rather average annualized inflation rates. They are multiplied by 10 in this chart for easier comparisons to other regional diffusion indexes.
Source: Federal Reserve Banks of Dallas, Kansas City, New York, Philadelphia, and Richmond and Bureau of Labor Statistics.

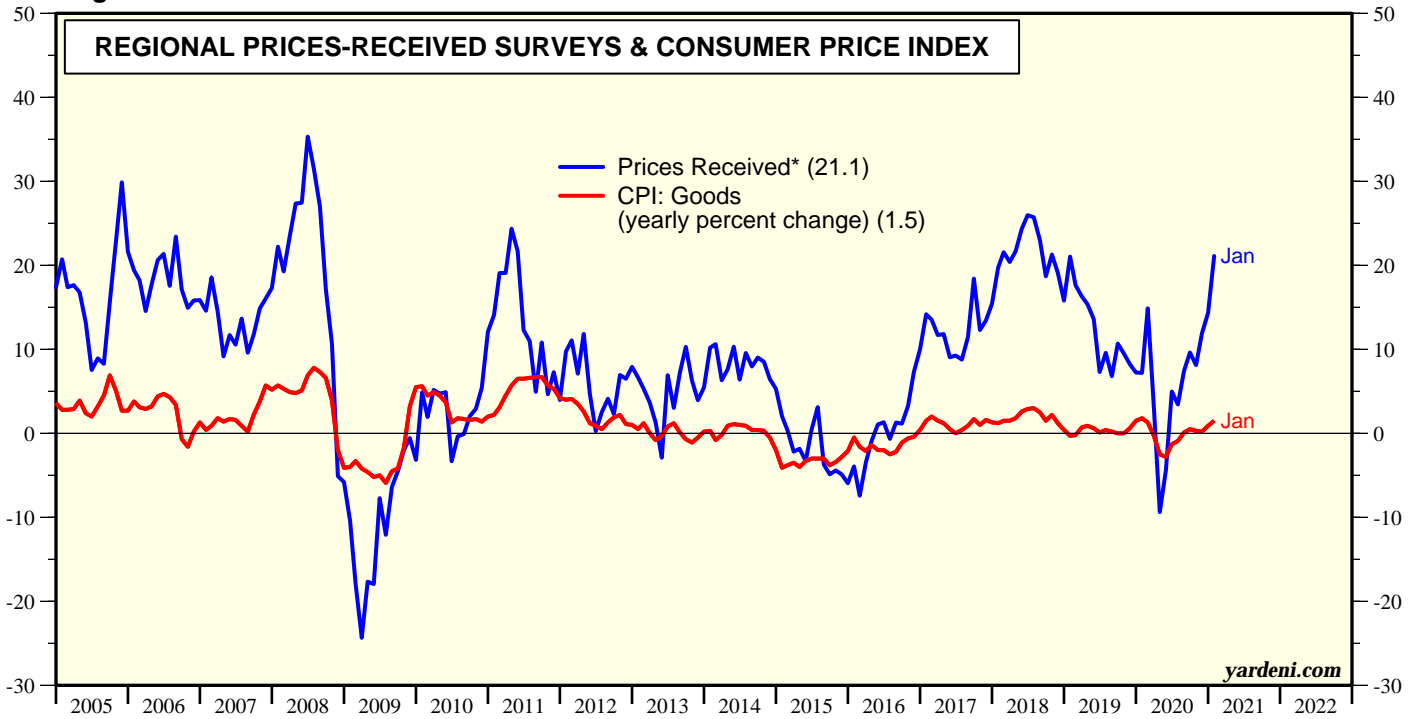
Figure 7.



Source: Bureau of Labor Statistics and Institute for Supply Management.

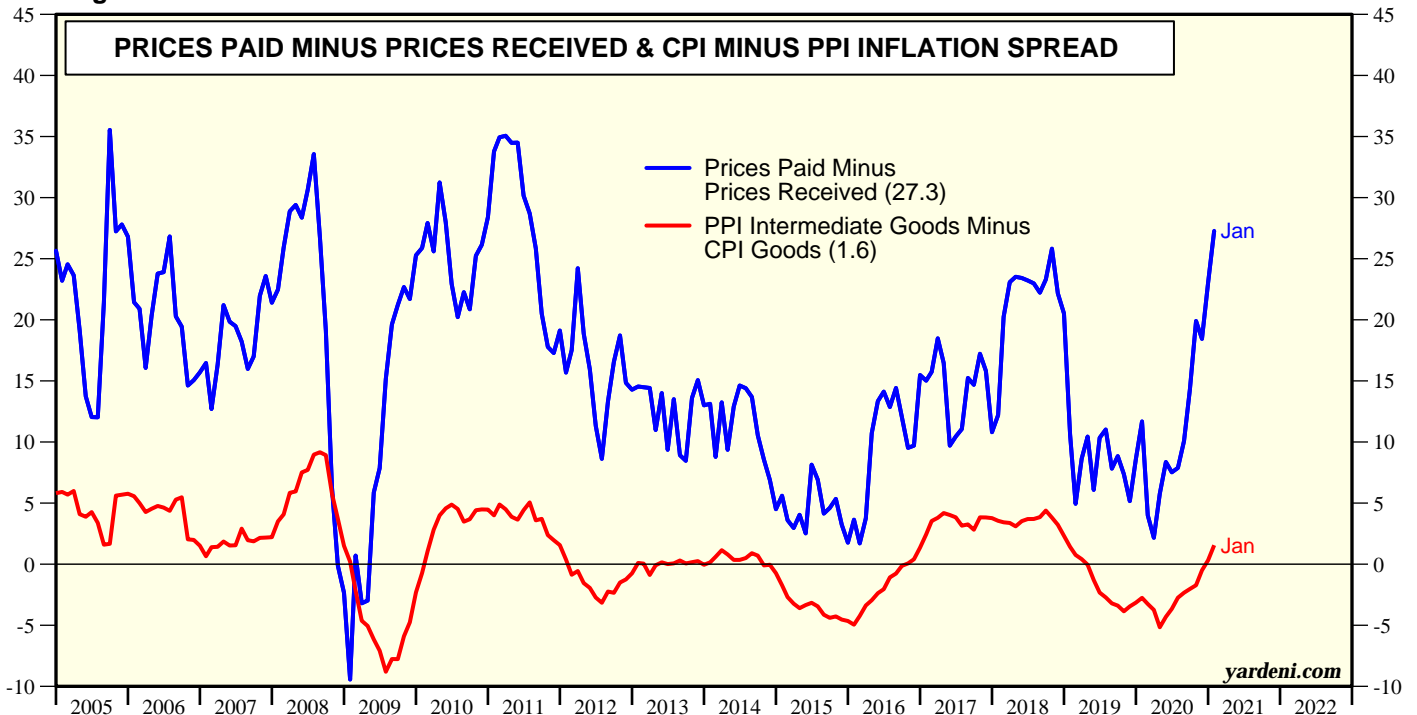
Prices Paid & Received

Figure 8.



* Average of prices received in surveys conducted by Dallas, Kansas City, New York, Philly, and Richmond Fed district banks. Richmond prices are not diffusion indexes, but rather average annualized inflation rates. They are multiplied by 10 in this chart for easier comparisons to other regional diffusion indexes.
Source: Federal Reserve Banks of Dallas, Kansas City, New York, Philadelphia, and Richmond and Bureau of Labor Statistics.

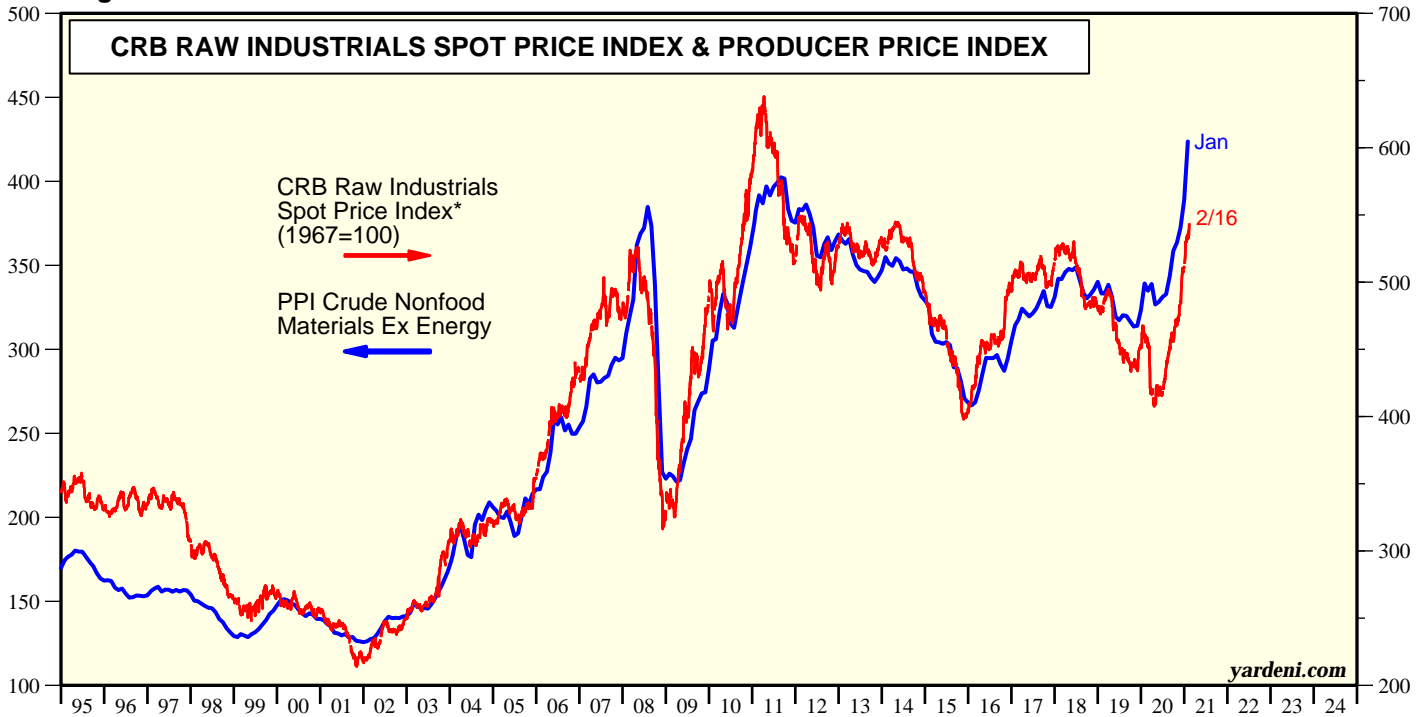
Figure 9.



* Average of prices paid and received in surveys conducted by Dallas, Kansas City, New York, Philly, and Richmond Fed district banks. Richmond prices are not diffusion indexes, but rather average annualized inflation rates. They are multiplied by 10 in this chart for easier comparisons to other regional diffusion indexes.
Source: Survey of business conditions conducted regionally by Federal Reserve Banks of Dallas, Kansas City, New York, Philadelphia, Richmond and Bureau of Labor Statistics.

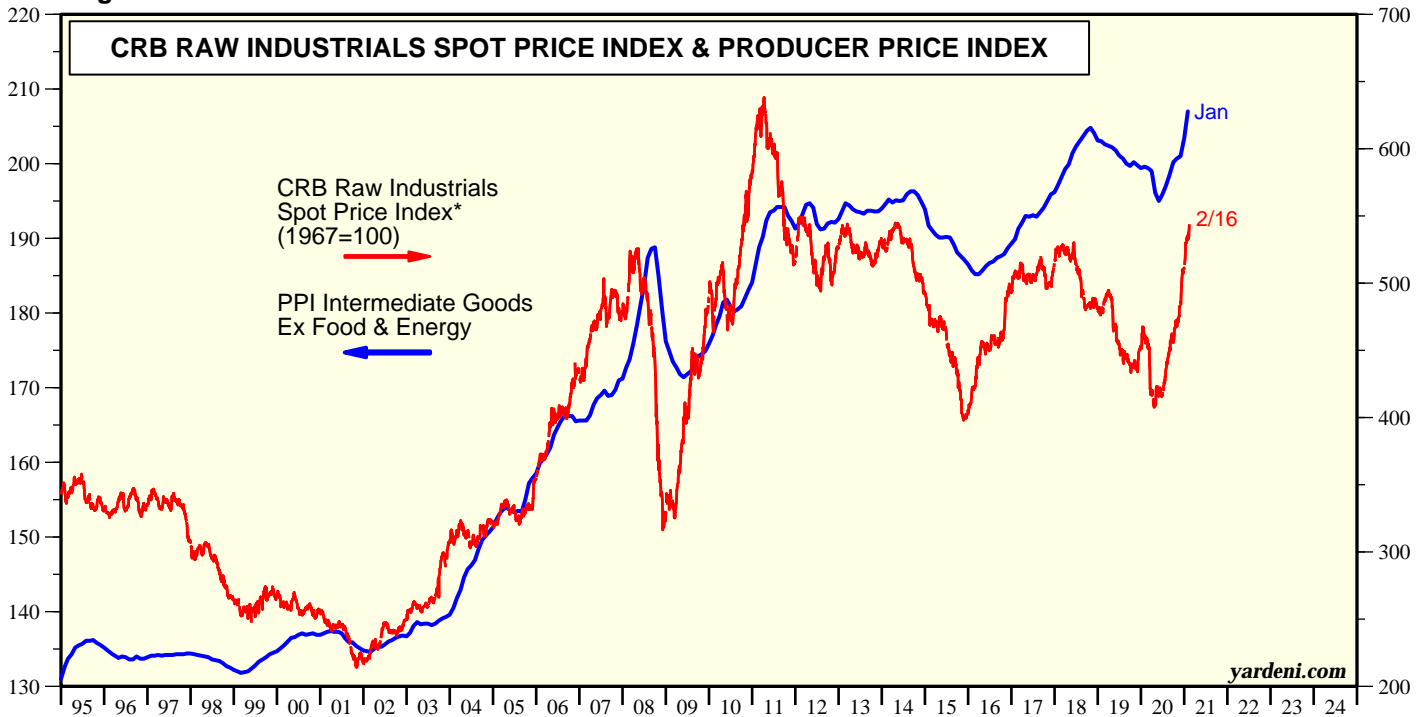
Commodity Prices & PPI

Figure 10.



* Includes copper scrap, lead scrap, steel scrap, tin, zinc, burlap, cotton, print cloth, wool tops, hides, rosin, rubber, and tallow.
Source: Commodity Research Bureau and Bureau of Labor Statistics.

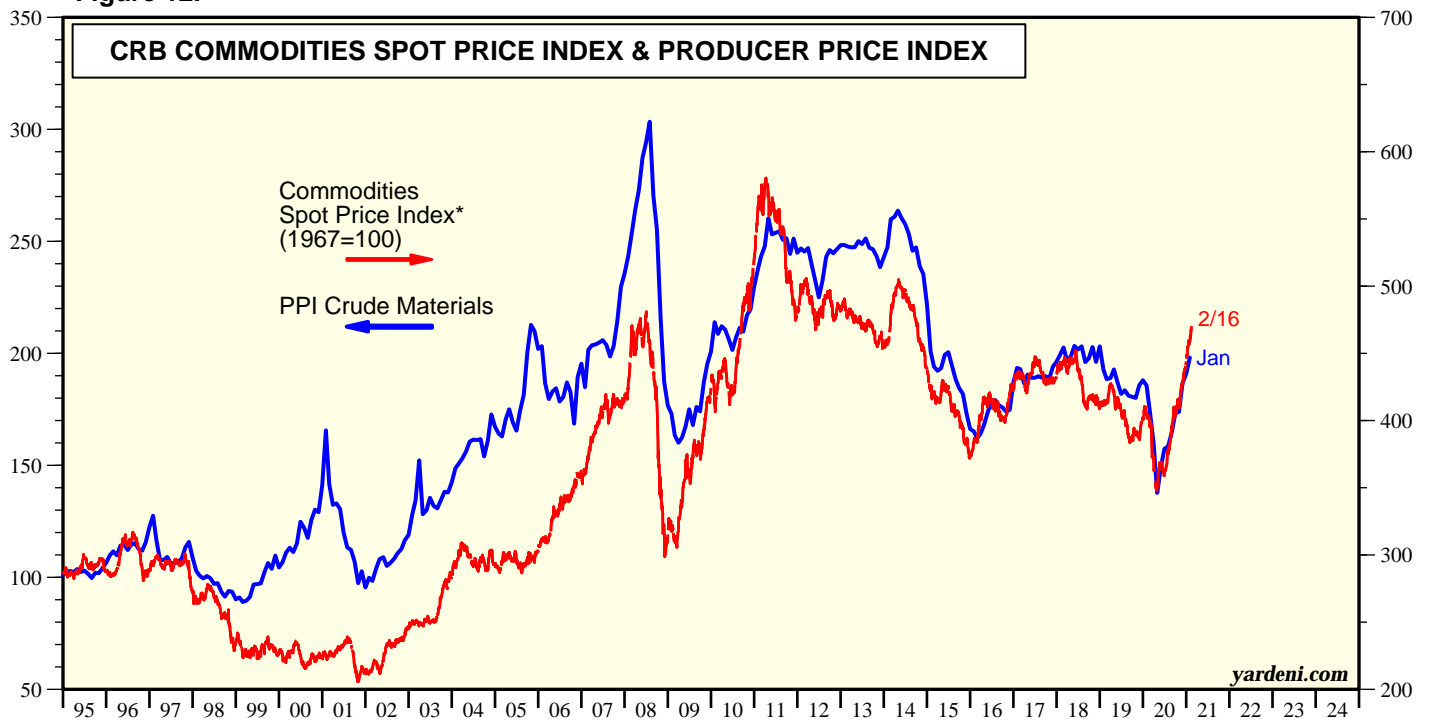
Figure 11.



* Includes copper scrap, lead scrap, steel scrap, tin, zinc, burlap, cotton, print cloth, wool tops, hides, rosin, rubber, and tallow.
Source: Commodity Research Bureau and Bureau of Labor Statistics.

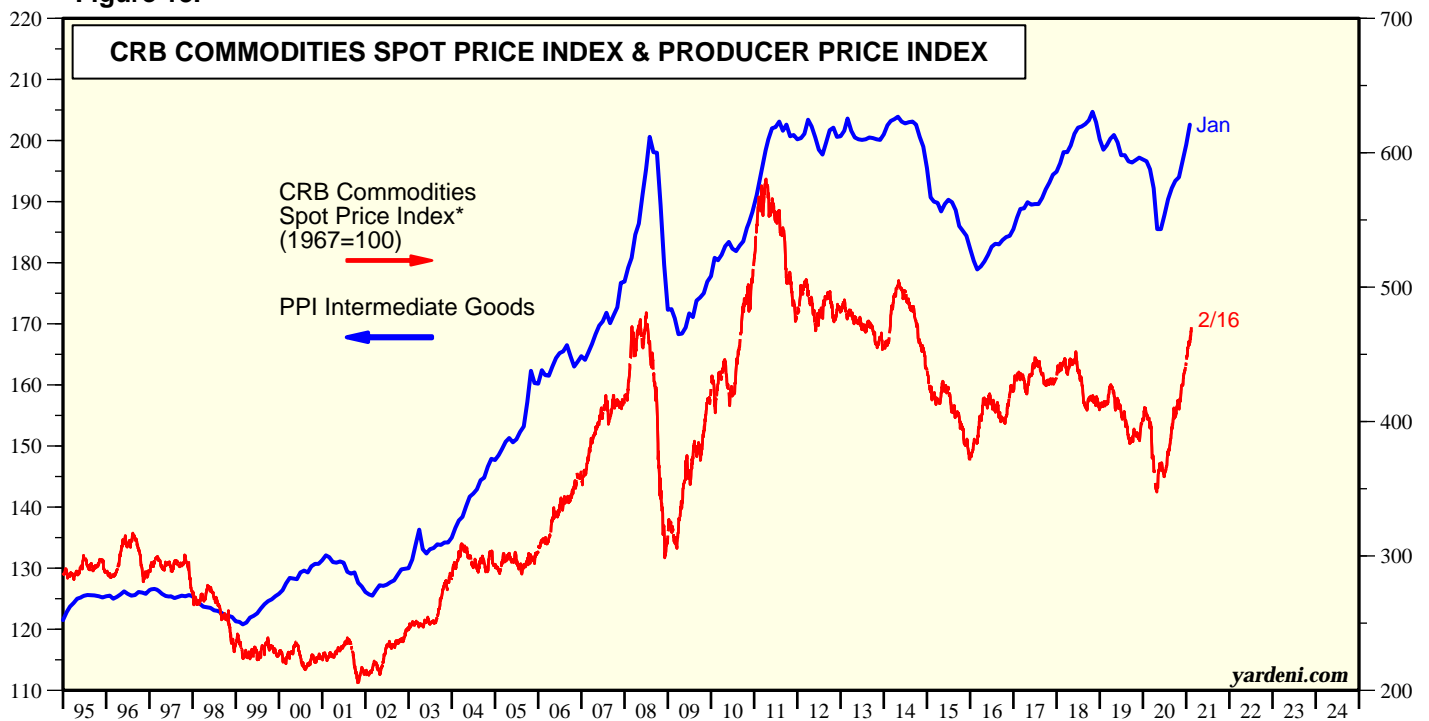
Commodity Prices & PPI

Figure 12.



* Includes copper scrap, lead scrap, steel scrap, tin, zinc, burlap, cotton, print cloth, wool tops, hides, rosin, rubber, and tallow.
Source: Commodity Research Bureau and Bureau of Labor Statistics.

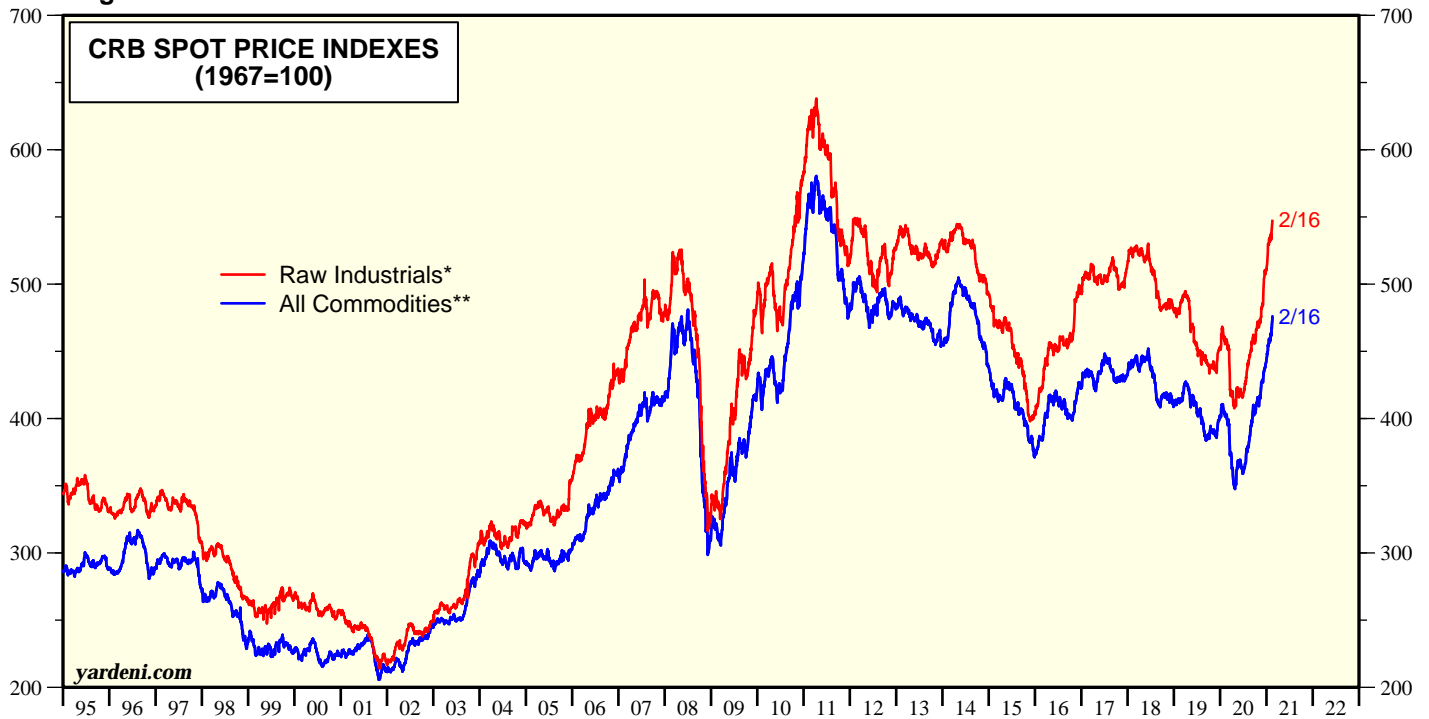
Figure 13.



* Includes copper scrap, lead scrap, steel scrap, tin, zinc, burlap, cotton, print cloth, wool tops, hides, rosin, rubber, and tallow.
Source: Commodity Research Bureau and Bureau of Labor Statistics.

Commodity Prices & the Dollar

Figure 14.

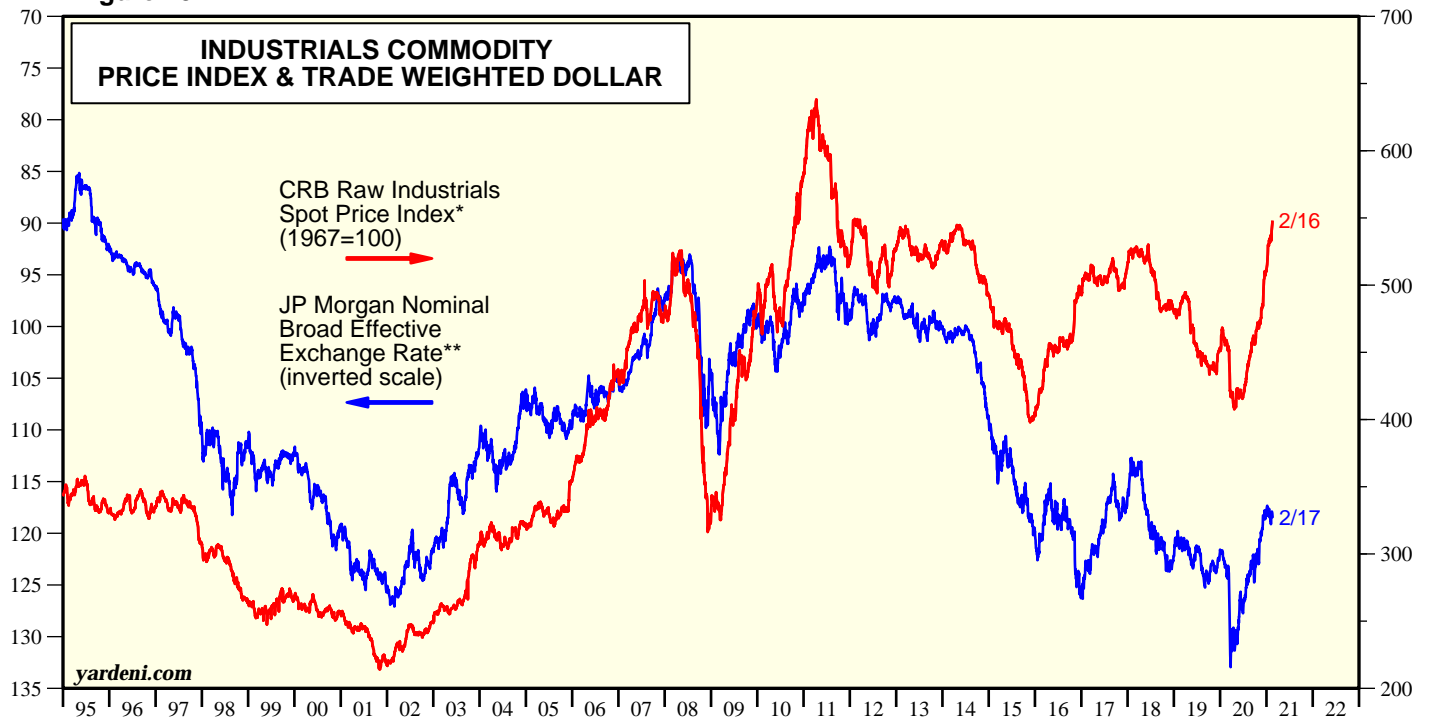


* Includes copper scrap, lead scrap, steel scrap, tin, zinc, burlap, cotton, print cloth, wool tops, hides, rosin, rubber, and tallow.

** Includes aluminum, cocoa, coffee, copper, corn, cotton, crude oil, gold, heating oil, lean hogs, live cattle, natural gas, nickel, orange juice, RBOB gasoline, silver, soybeans, sugar and wheat.

Source: Commodity Research Bureau.

Figure 15.

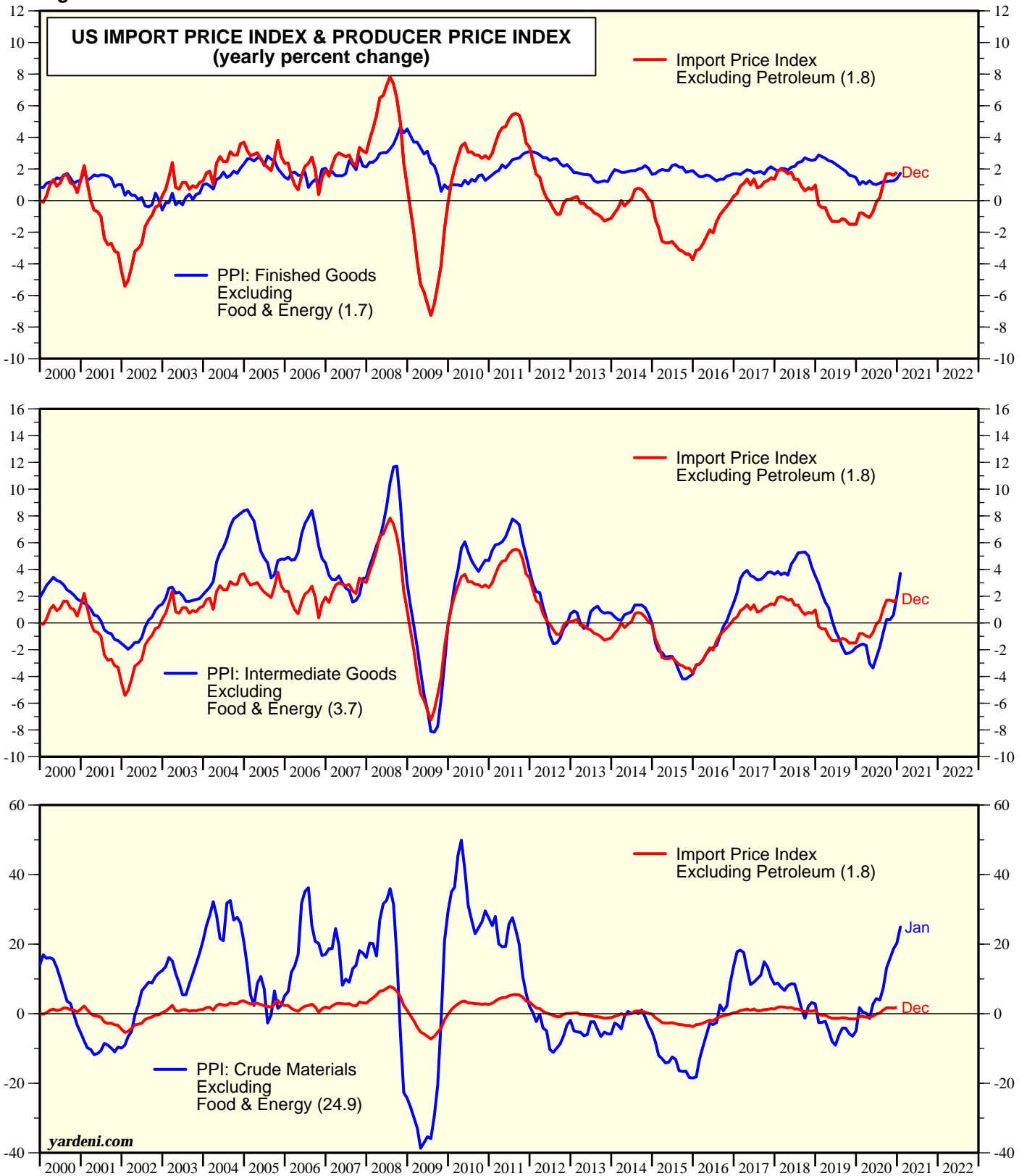


* Includes copper scrap, lead scrap, steel scrap, tin, zinc, burlap, cotton, print cloth, wool tops, hides, rosin, rubber, and tallow.

** Argentina, Australia, Brazil, Bulgaria, Canada, Chile, China, Colombia, Croatia, Czech Republic, Denmark, Ecuador, Egypt, France, Germany, Hong Kong, Hungary, Japan, India, Indonesia, Israel, Italy, Korea, Kuwait, Malaysia, Mexico, Morocco, New Zealand, Nigeria, Norway, Pakistan, Panama, Peru, Philippines, Poland, Romania, Russia Saudi Arabia, Singapore, South Africa, Spain, Sweden, Switzerland, Taiwan, Thailand, Turkey, United Kingdom, Ukraine, Uruguay, Venezuela, Vietnam, and United States. Source: Commodity Research Bureau and JP Morgan.

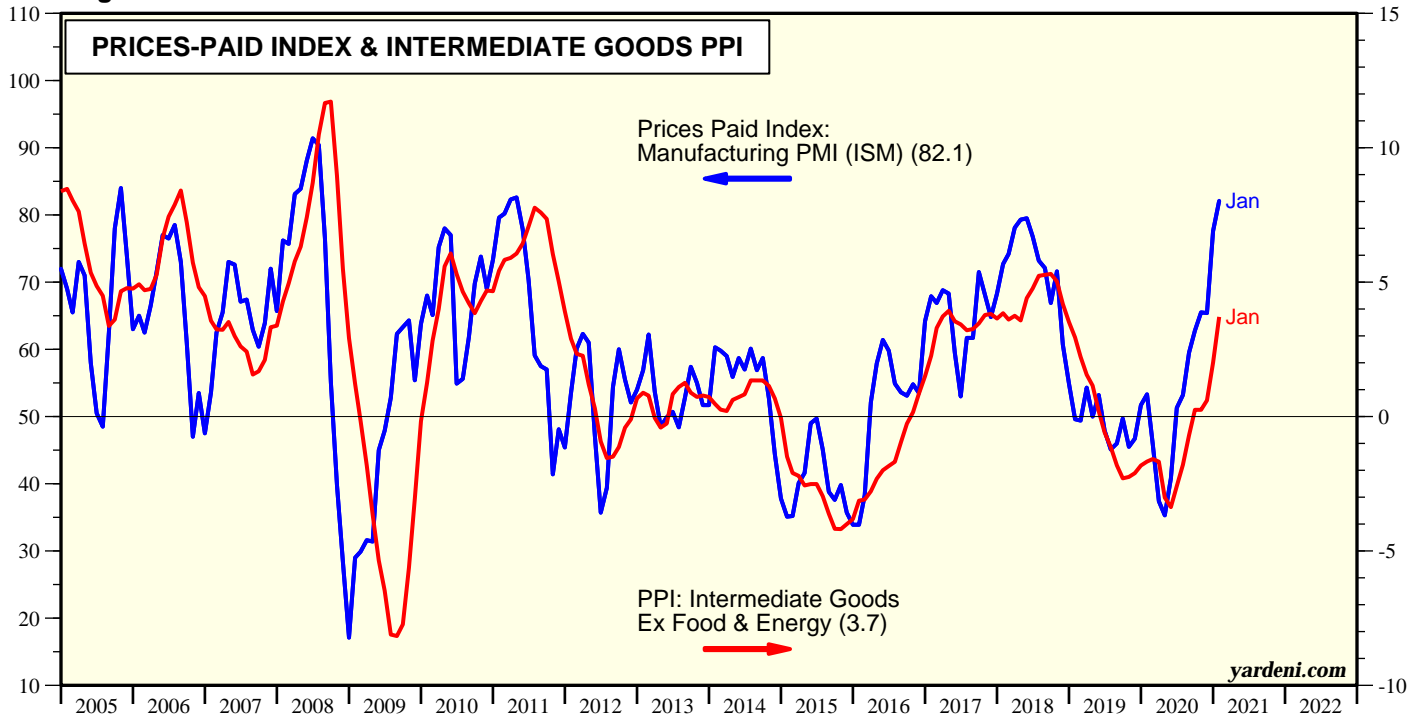
Imports Prices & PPI

Figure 16.



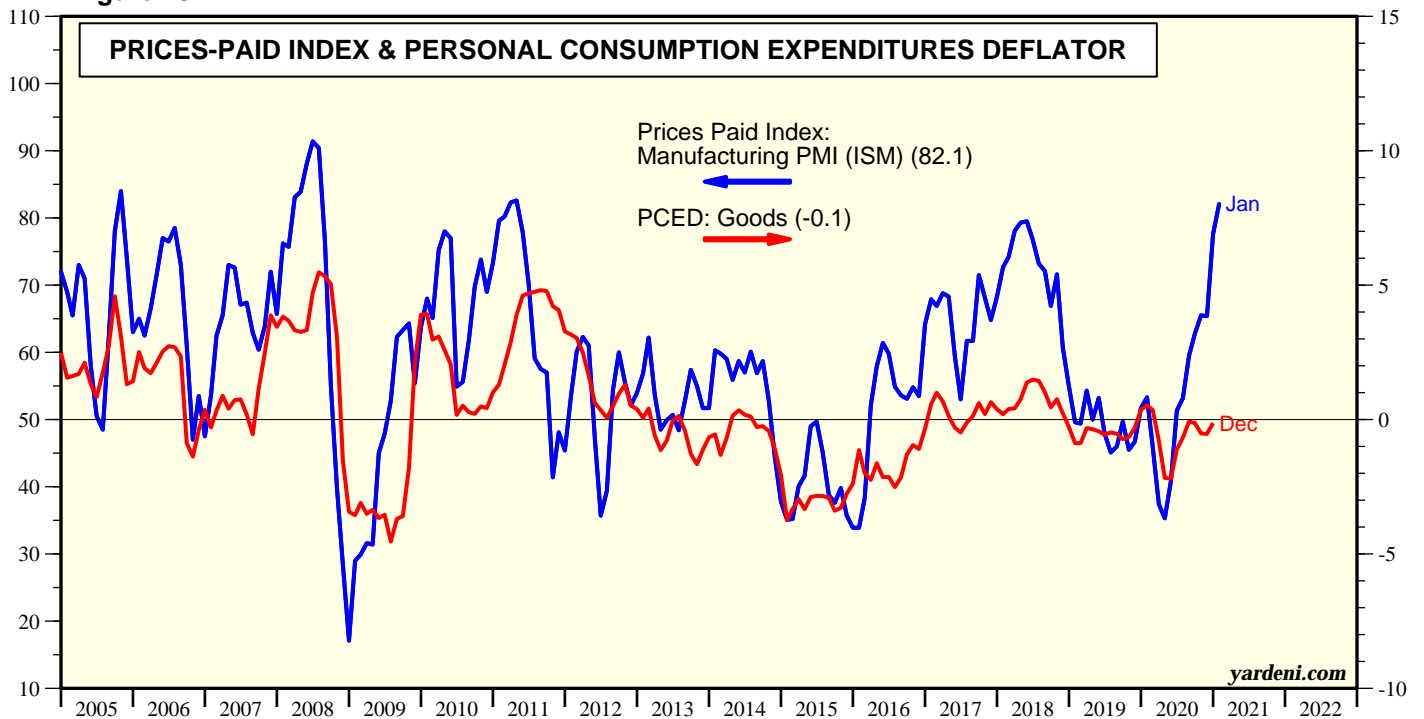
Prices Paid

Figure 17.



Source: Institute for Supply Management, Bureau of Economic Analysis, and Bureau of Labor Statistics.

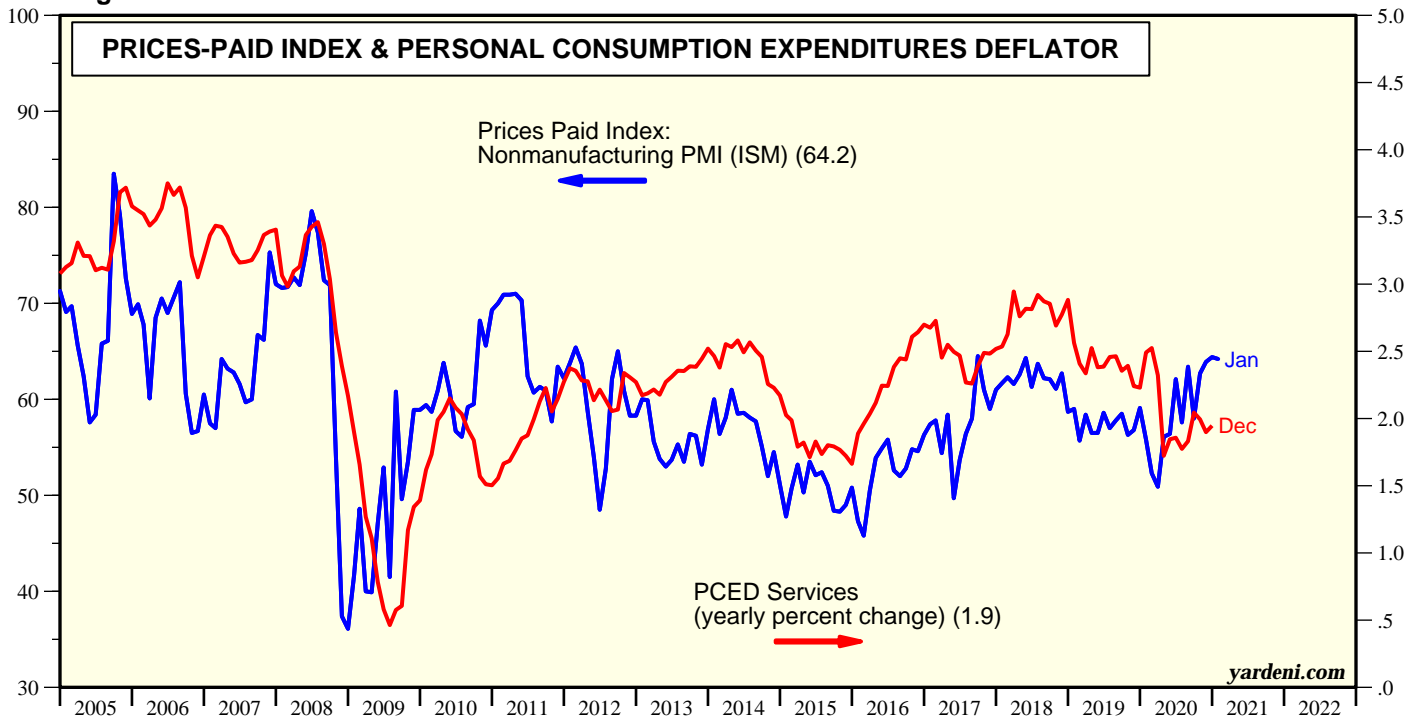
Figure 18.



Source: Institute for Supply Management, Bureau of Economic Analysis, and Bureau of Labor Statistics.

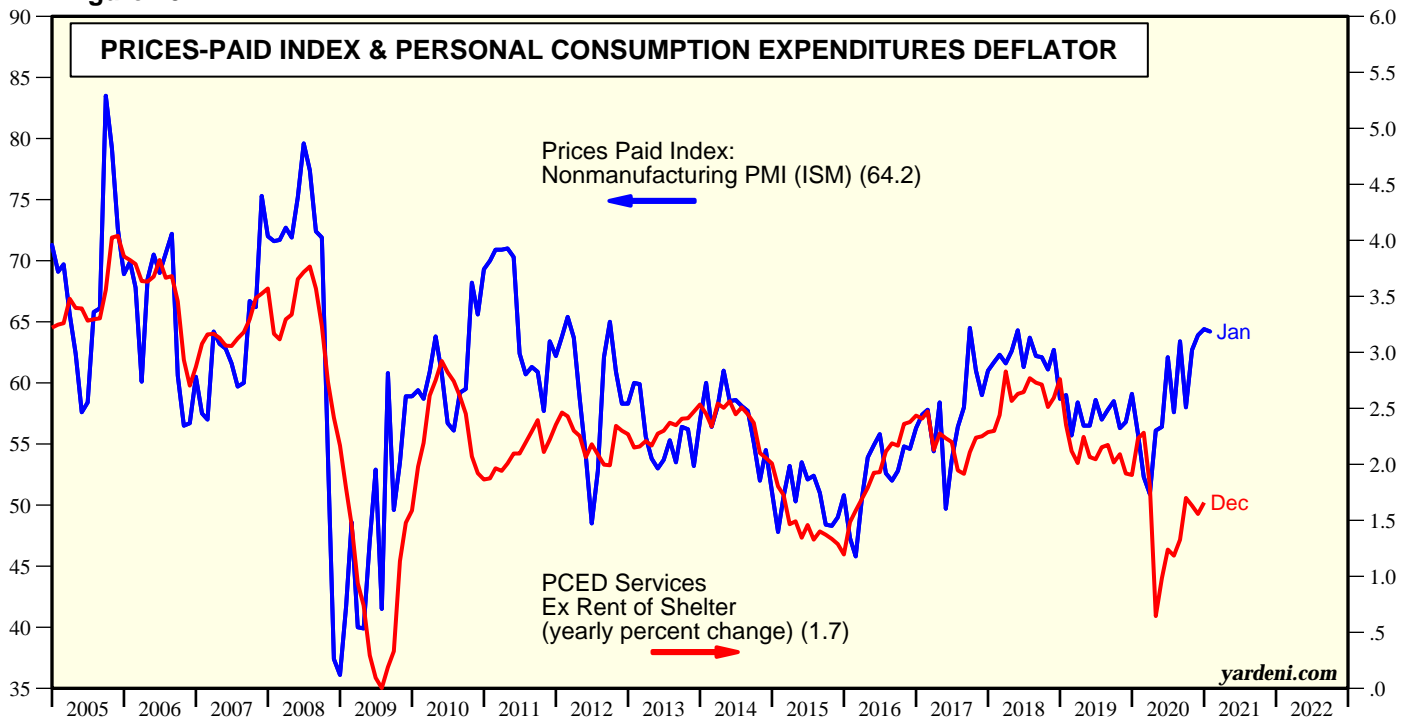
Prices Paid

Figure 19.



Source: Institute for Supply Management and Bureau of Economic Analysis.

Figure 20.



Source: Institute for Supply Management and Bureau of Economic Analysis.

Copyright (c) Yardeni Research, Inc. 2021. All rights reserved. The information contained herein has been obtained from sources believed to be reliable, but is not necessarily complete and its accuracy cannot be guaranteed. No representation or warranty, express or implied, is made as to the fairness, accuracy, completeness, or correctness of the information and opinions contained herein. The views and the other information provided are subject to change without notice. All reports and podcasts posted on www.yardeni.com, blog.yardeni.com, and YRI's Apps are issued without regard to the specific investment objectives, financial situation, or particular needs of any specific recipient and are not to be construed as a solicitation or an offer to buy or sell any securities or related financial instruments. Past performance is not necessarily a guide to future results. Company fundamentals and earnings may be mentioned occasionally, but should not be construed as a recommendation to buy, sell, or hold the company's stock. Predictions, forecasts, and estimates for any and all markets should not be construed as recommendations to buy, sell, or hold any security--including mutual funds, futures contracts, and exchange traded funds, or any similar instruments.

The text, images, and other materials contained or displayed on any Yardeni Research, Inc. product, service, report, email or website are proprietary to Yardeni Research, Inc. and constitute valuable intellectual property. No material from any part of www.yardeni.com, blog.yardeni.com, and YRI's Apps may be downloaded, transmitted, broadcast, transferred, assigned, reproduced or in any other way used or otherwise disseminated in any form to any person or entity, without the explicit written consent of Yardeni Research, Inc. All unauthorized reproduction or other use of material from Yardeni Research, Inc. shall be deemed willful infringement(s) of this copyright and other proprietary and intellectual property rights, including but not limited to, rights of privacy. Yardeni Research, Inc. expressly reserves all rights in connection with its intellectual property, including without limitation the right to block the transfer of its products and services and/or to track usage thereof, through electronic tracking technology, and all other lawful means, now known or hereafter devised. Yardeni Research, Inc. reserves the right, without further notice, to pursue to the fullest extent allowed by the law any and all criminal and civil remedies for the violation of its rights.

The recipient should check any email and any attachments for the presence of viruses. Yardeni Research, Inc. accepts no liability for any damage caused by any virus transmitted by this company's emails, website, blog and Apps. Additional information available on [request](#).